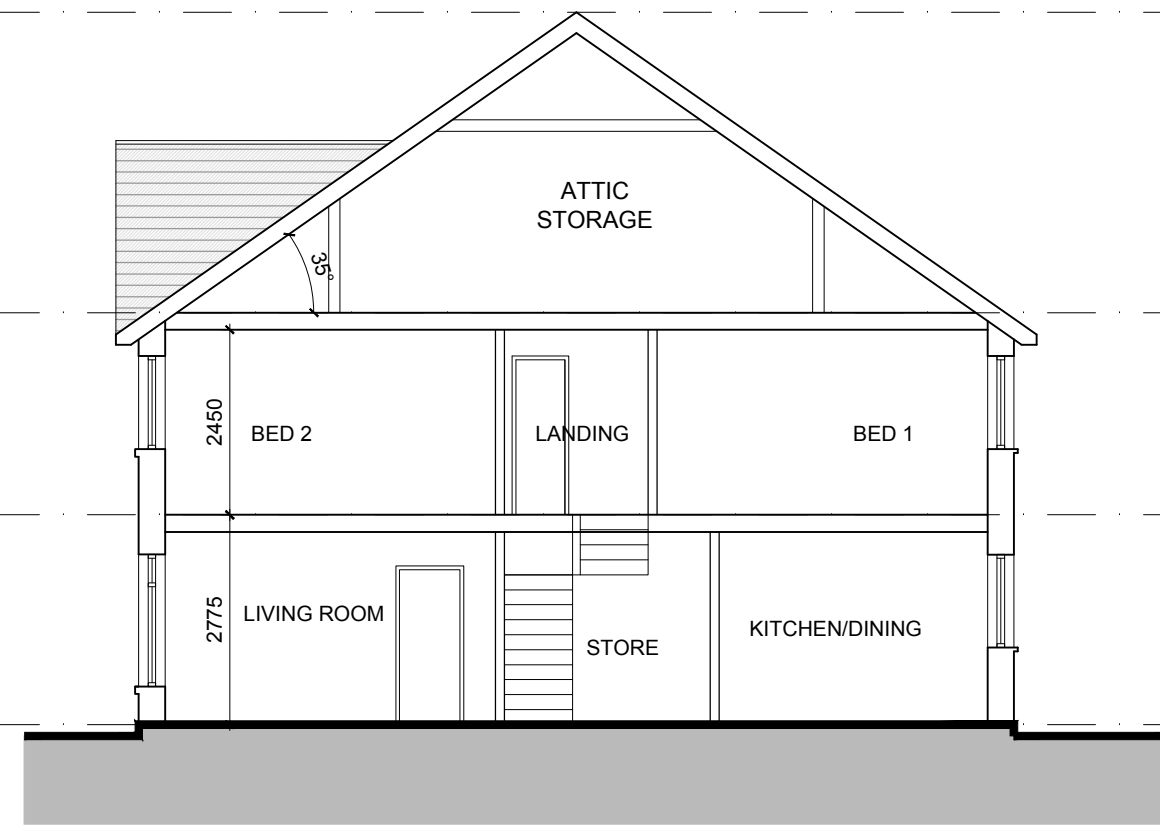


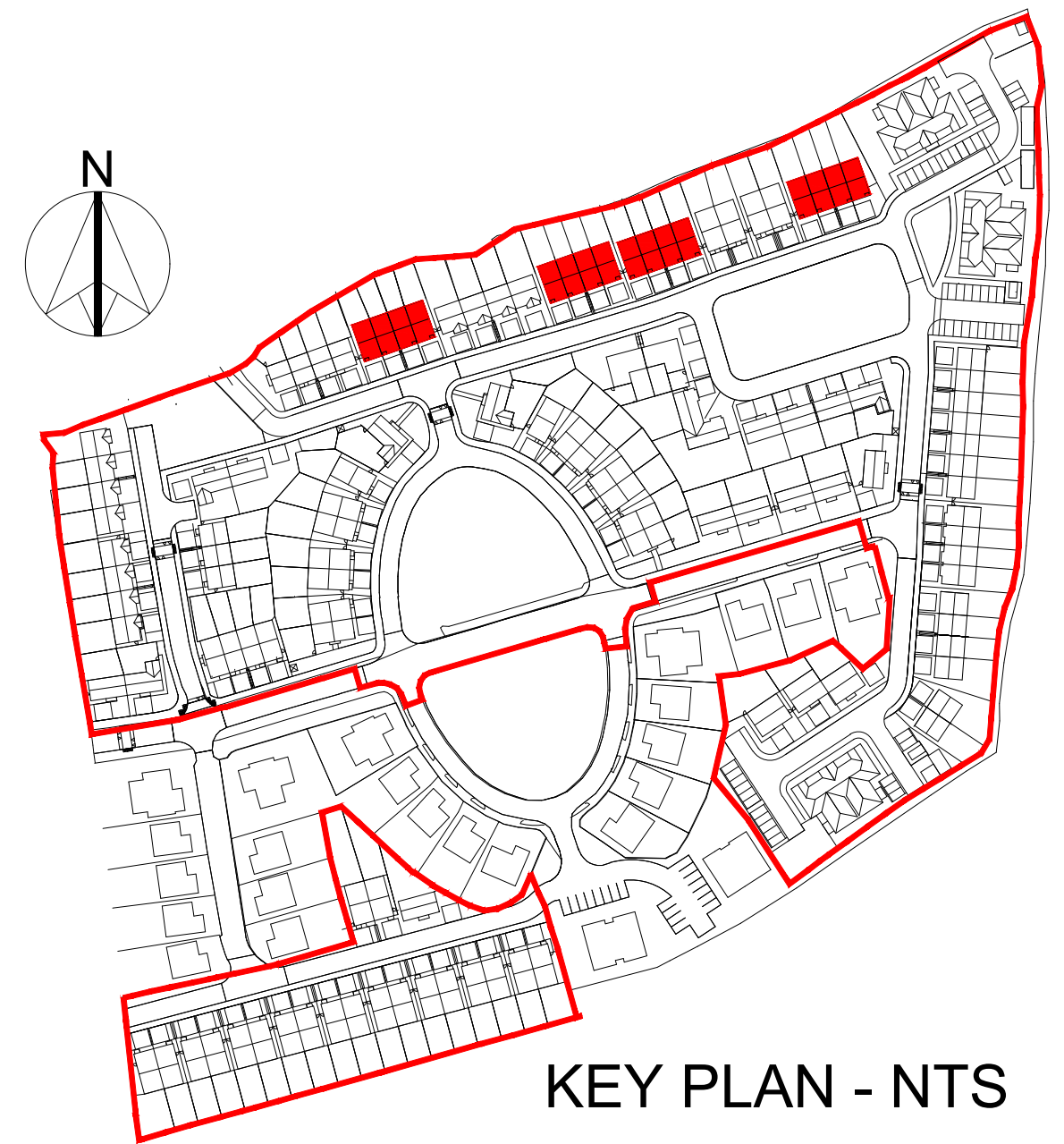
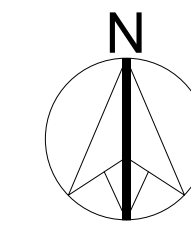
TYPE B1-B-B-B1 - 3 BED - TERRACED



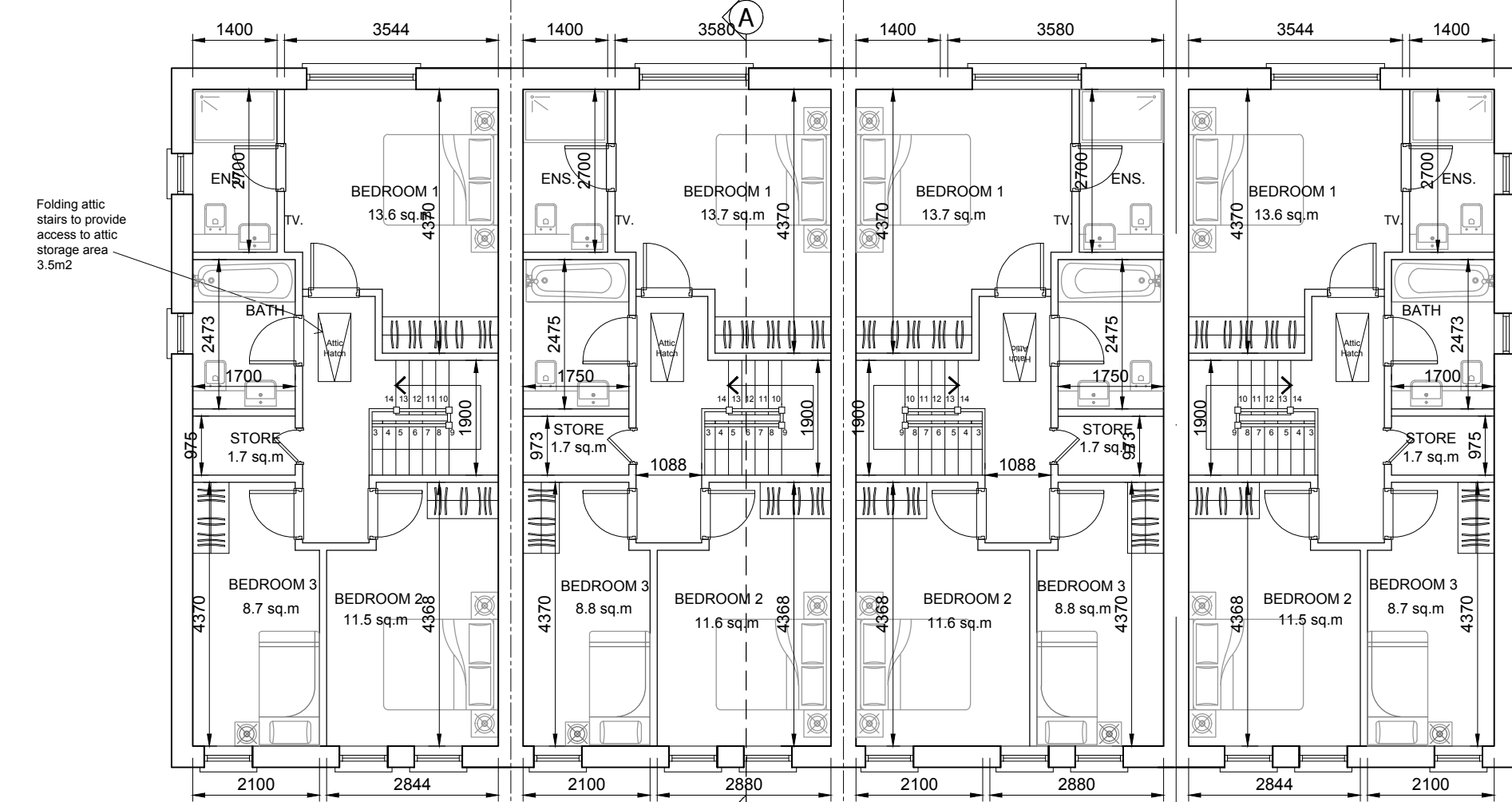
FRONT ELEVATION (SOUTH) - House Types B1-B-B-B1



SECTION A-A



KEY PLAN - NTS



**FIRST FLOOR PLAN**  
House Type B1  
Floor area  
55.1m<sup>2</sup> / 593 sq.ft

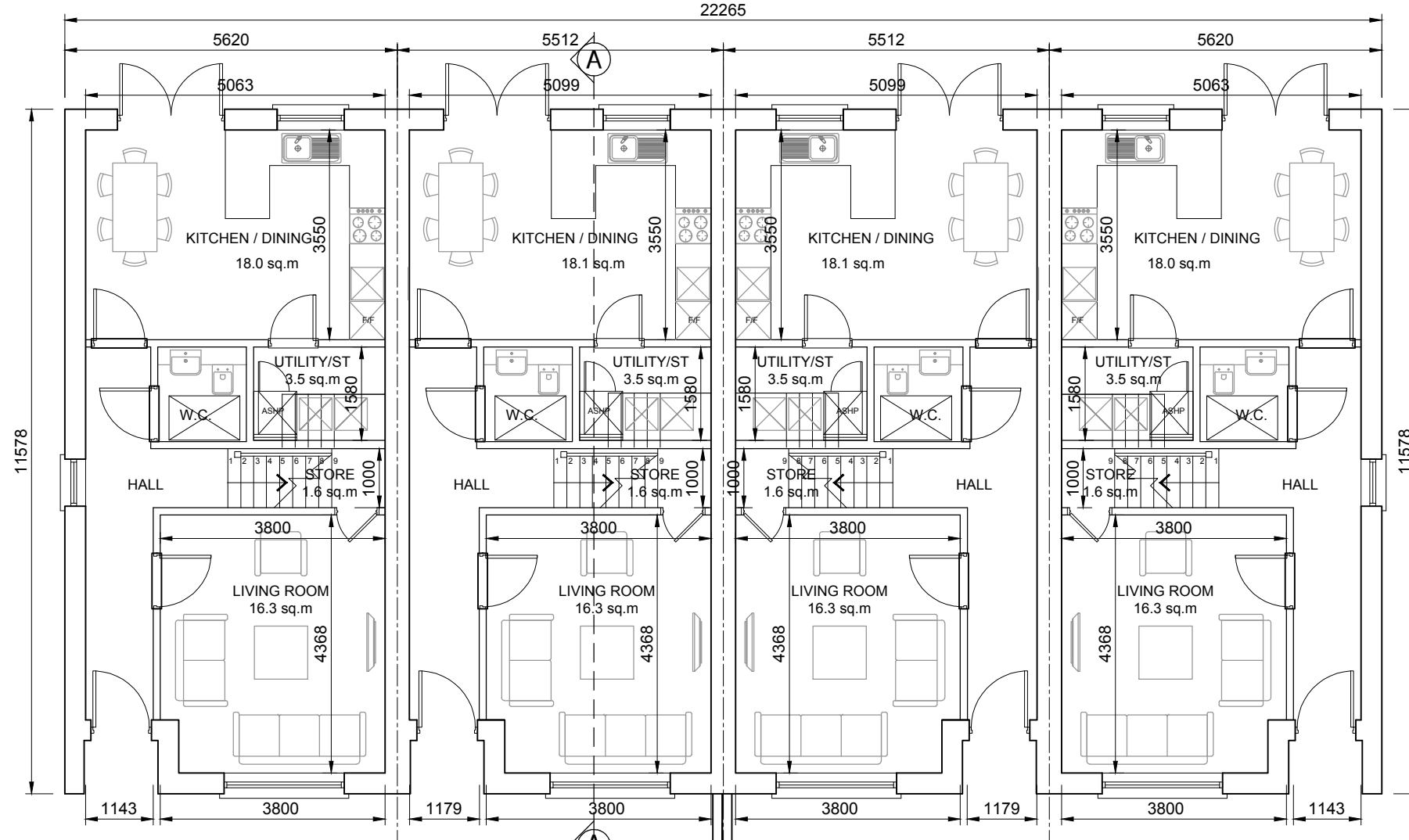
**FIRST FLOOR PLAN**  
House Type B  
Floor area  
55.5m<sup>2</sup> / 597 sq.ft

**FIRST FLOOR PLAN**  
House Type B  
Floor area  
55.5m<sup>2</sup> / 597 sq.ft

**FIRST FLOOR PLAN**  
House Type B1  
Floor area  
55.1m<sup>2</sup> / 593 sq.ft



REAR ELEVATION (NORTH) - House Types B1-B-B-B1

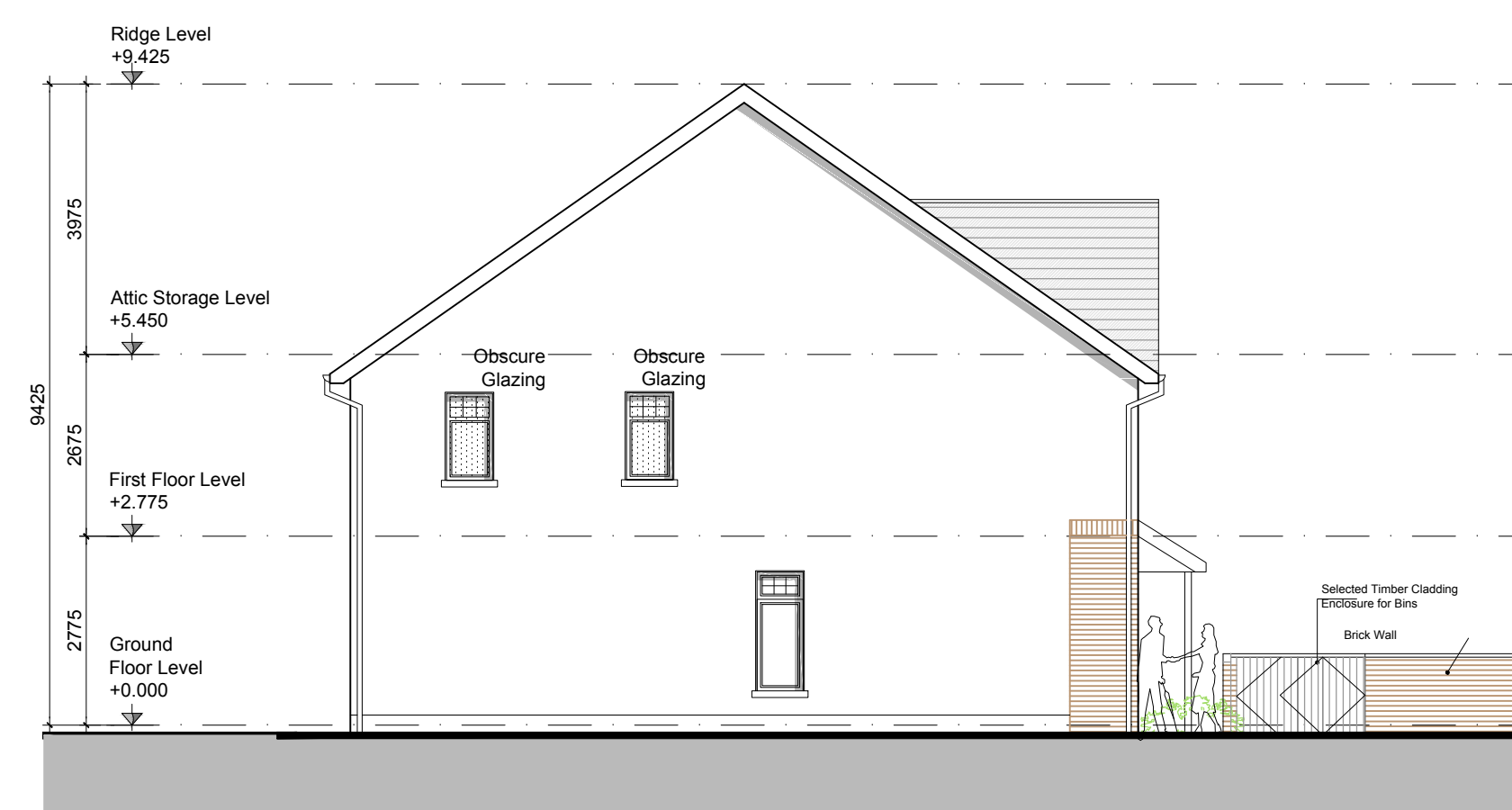


**GROUND FLOOR PLAN**  
House Type B1  
Floor area  
53.7m<sup>2</sup> / 578 sq.ft  
OA 108.8m<sup>2</sup> / 1171 sq.ft

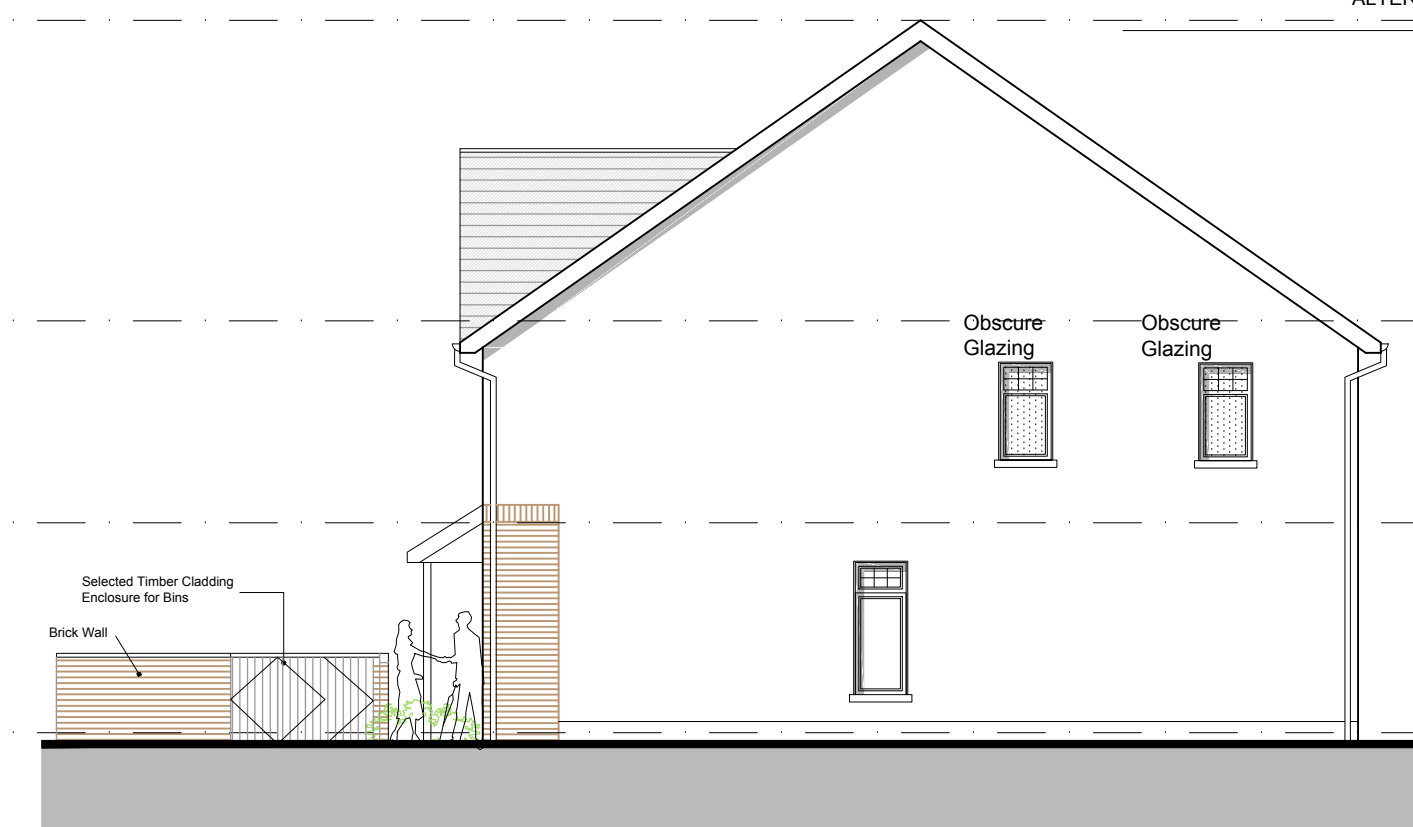
**GROUND FLOOR PLAN**  
House Type B  
Floor area  
54.0m<sup>2</sup> / 581 sq.ft  
OA 109.5m<sup>2</sup> / 1178 sq.ft

**GROUND FLOOR PLAN**  
House Type B  
Floor area  
54.0m<sup>2</sup> / 581 sq.ft  
OA 109.5m<sup>2</sup> / 1178 sq.ft

**GROUND FLOOR PLAN**  
House Type B1  
Floor area  
53.7m<sup>2</sup> / 578 sq.ft  
OA 108.8m<sup>2</sup> / 1171 sq.ft



SIDE ELEVATION (WEST) House Type B1



SIDE ELEVATION (EAST) House Type B1

**GENERAL NOTES**

THIS DRAWING TO BE READ IN CONJUNCTION WITH ARCHITECT'S DRAWINGS, CONSULTANT ENGINEER'S DRAWINGS AND SPECIFICATIONS & LANDSCAPE ARCHITECT'S DRAWINGS  
REFER TO ARCHITECT'S SITE PLAN PL02 FOR NORTH ORIENTATION.  
LEVELS GIVEN ON HOUSE TYPE DRAWINGS ARE GIVEN TO A LOCAL ABSOLUTE ZERO LEVEL. FOR SPECIFIC LEVELS DEPENDING ON INDIVIDUAL UNIT LOCATION, REFER TO ARCHITECT'S CONTEXT SECTIONS AND ENGINEER'S DRAWINGS WHERE LEVELS ARE ALL GIVEN IN RELATION TO LAND SURVEYOR'S BENCHMARK BASED ON MALIN HEAD DATUM LEVEL.

**NOTES ON FINISHES:**

- ROOF: TO BE FINISHED IN SLATE OR CONCRETE ROOF TILES IN SELECTED COLOUR OR SIMILAR APPROVED.
- WALLS: SELECTED CLAY BRICKWORK WHERE INDICATED OTHERWISE PAINTED SAND / CEMENT RENDER OR SELF COLOURED RENDER. EXPRESSED BANDS AROUND EXTERNAL OPENS/ EXPRESSED LINTELS OVER EXTERNAL OPENS WHERE INDICATED TO BE RECONSTITUTED STONE (LIGHT CREAM LIMESTONE OR GRANITE EFFECT) OR RENDER
- JOINERY: ALL WINDOWS AND DOORS, FRAMES AND LEAVES, TO BE ALUMINIUM POWDER-COATED TO APPROVED COLOUR OR UPVC. OBSCURE GLAZING WHERE INDICATED TO SENSITIVE WINDOWS.
- RAINWATER GOODS: GUTTERS, DOWNPIPES, AND FIXINGS TO BE UPVC OR ALUMINIUM POWDER COATED TO SELECTED COLOUR TO MATCH ROOF SLATES

\* PV PANELS / SOLAR PANELS: INDICATIVE PV PANELS / SOLAR PANELS POSITION, FINAL POSITION DEPENDS ON HOUSE ORIENTATION. THE PANELS SHOWN ARE A PROVISIONAL OPTION TO SATISFY RENEWABLE ENERGY REQUIREMENTS OF BUILDING REGS PART L WHICH MAY BE OMITTED IN FAVOUR OF AN ALTERNATIVE RENEWABLE ENERGY SOURCE.

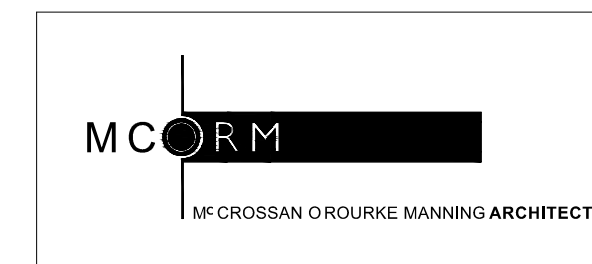
<b>B</b>	HOUSE TYPE B 2 STOREY 3 BED	Mild-Terraced 109.5 SQM / 1171 SQF	<b>B1</b>	HOUSE TYPE B1 2 STOREY 3 BED	End of Terrace 108.8 SQM / 1171 SQF
----------	-----------------------------------	---------------------------------------	-----------	------------------------------------	--

TYPE B1-B-B-B1 - 3 BED - TERRACED

**NOTES:**

DO NOT SCALE FROM DRAWINGS. WORK TO FIGURED DIMENSIONS ONLY. ARCHITECT TO BE NOTIFIED OF ALL DISCREPANCIES.

REVISIONS		
DATE	DESCRIPTION	No.



PROJECT TITLE: <b>Foxburrow, Portlaoise</b>	DATE: May/20	DRAWN BY: MF
DRAWING TITLE: <b>HOUSE TYPE B1-B-B-B1 Plans, Section &amp; Elevations</b>	SCALE: 1:100	REVISION: -
1 Grantham Street, Dublin 8, D08 A49Y, Ireland. Tel: 01-4788700 Fax: 01-4788711 E-Mail: <a href="mailto:arc@mcorm.com">arc@mcorm.com</a>	JOB NO: 18030	DRAWING NO: PL05