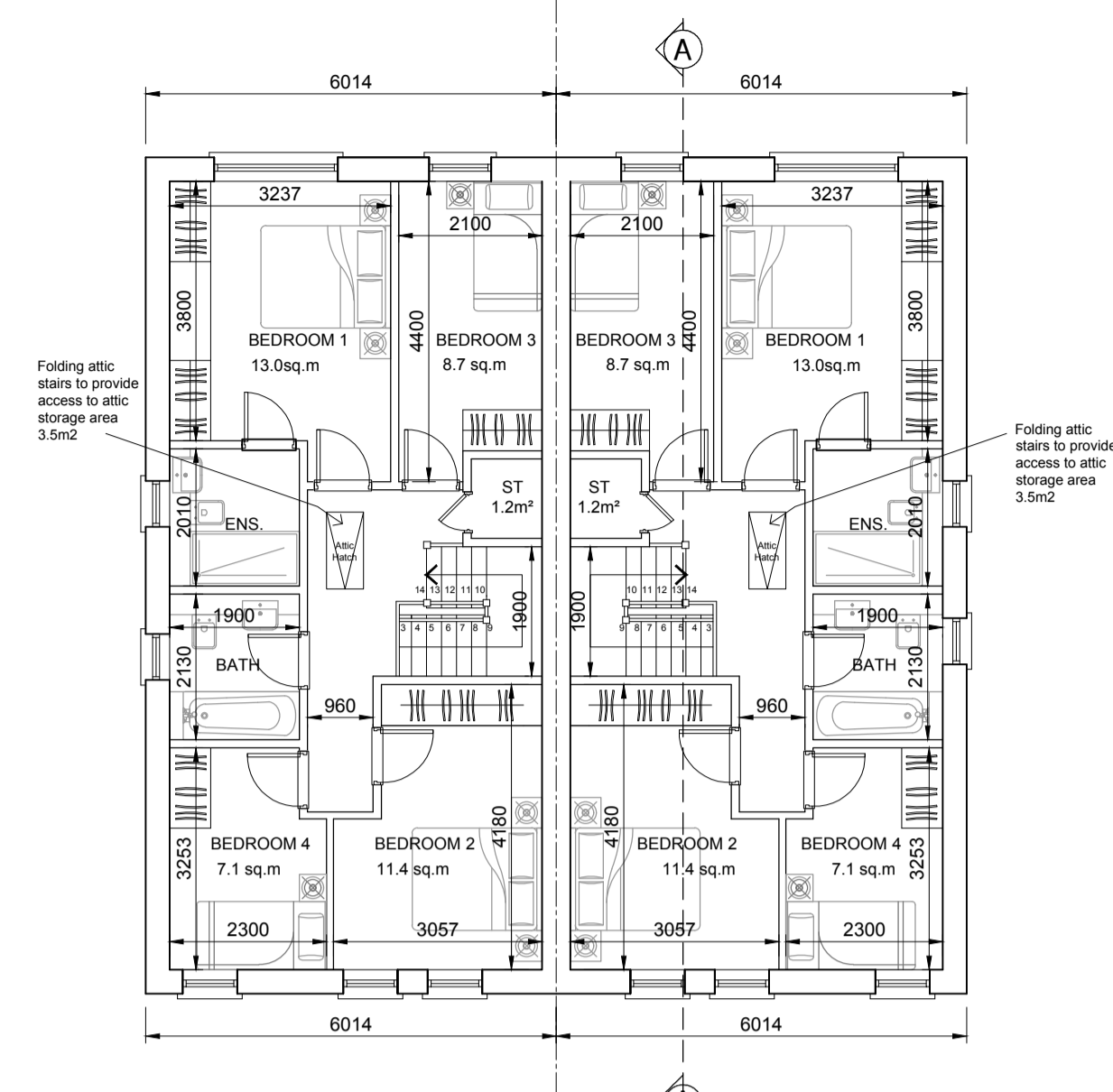
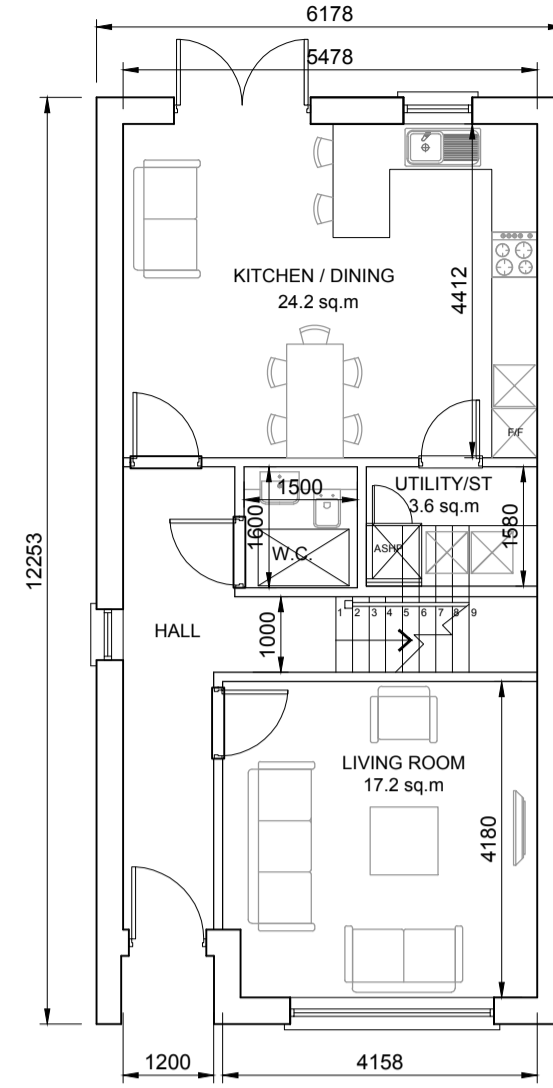


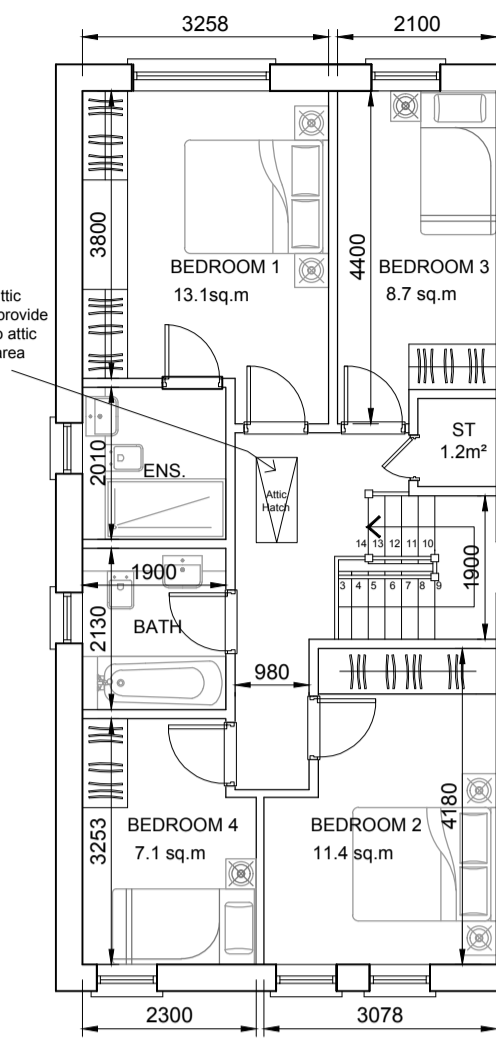
**HOUSE TYPE A-A1
GROUND FLOOR PLAN (SEMI-DETACHED)**
61.6 m² / 663 sq.ft
OA 124.6m² / 1341 sq.ft



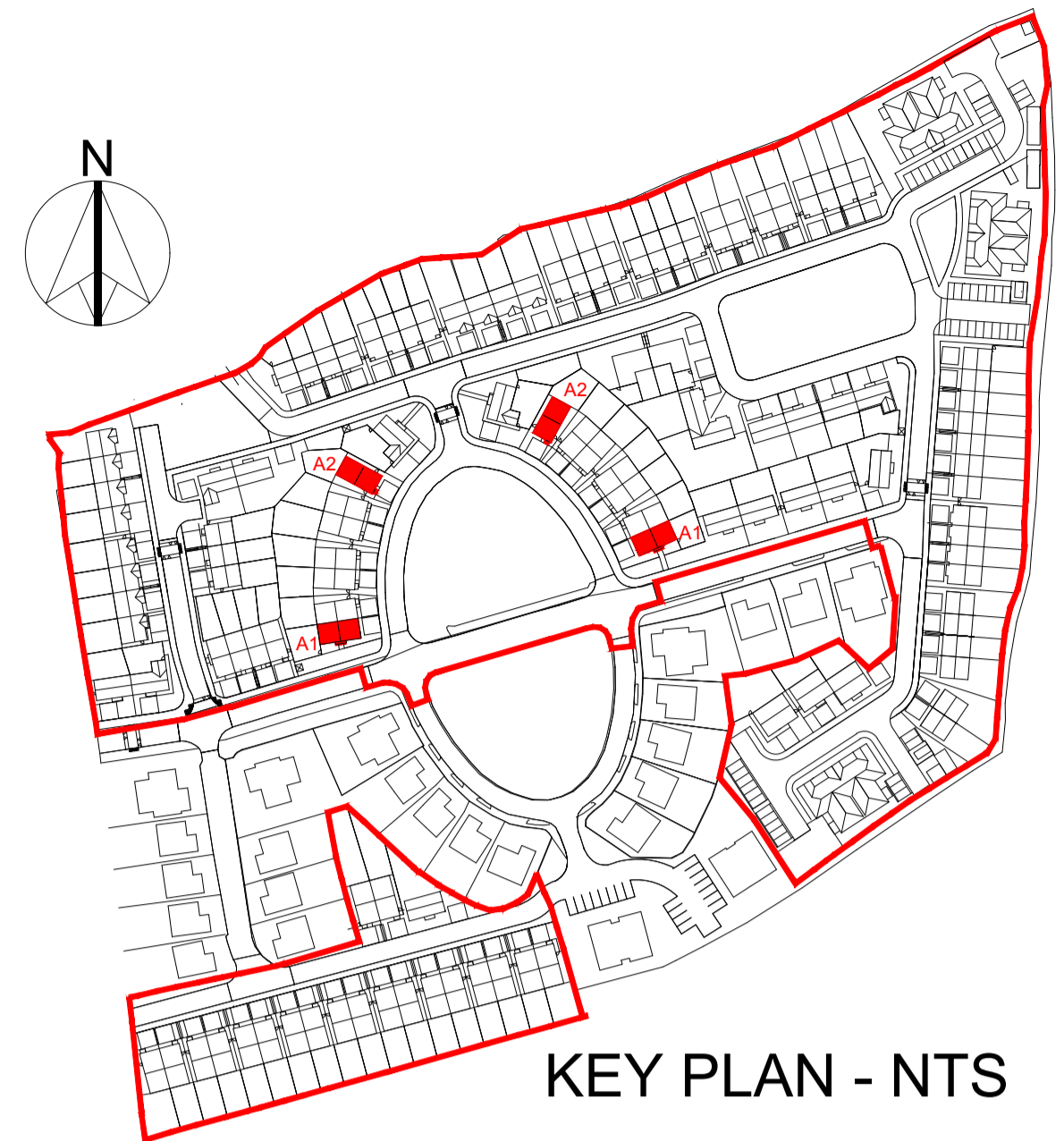
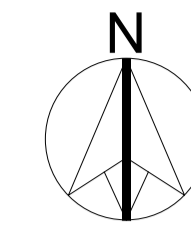
**HOUSE TYPE A-A1
FIRST FLOOR PLAN**
63.0 m² / 678 sq.ft



**HOUSE TYPE A2
GROUND FLOOR PLAN (DETACHED)**
61.6 m² / 663 sq.ft
OA 124.9m² / 1344 sq.ft



**HOUSE TYPE A2
FIRST FLOOR PLAN**
63.3 m² / 681 sq.ft



KEY PLAN - NTS



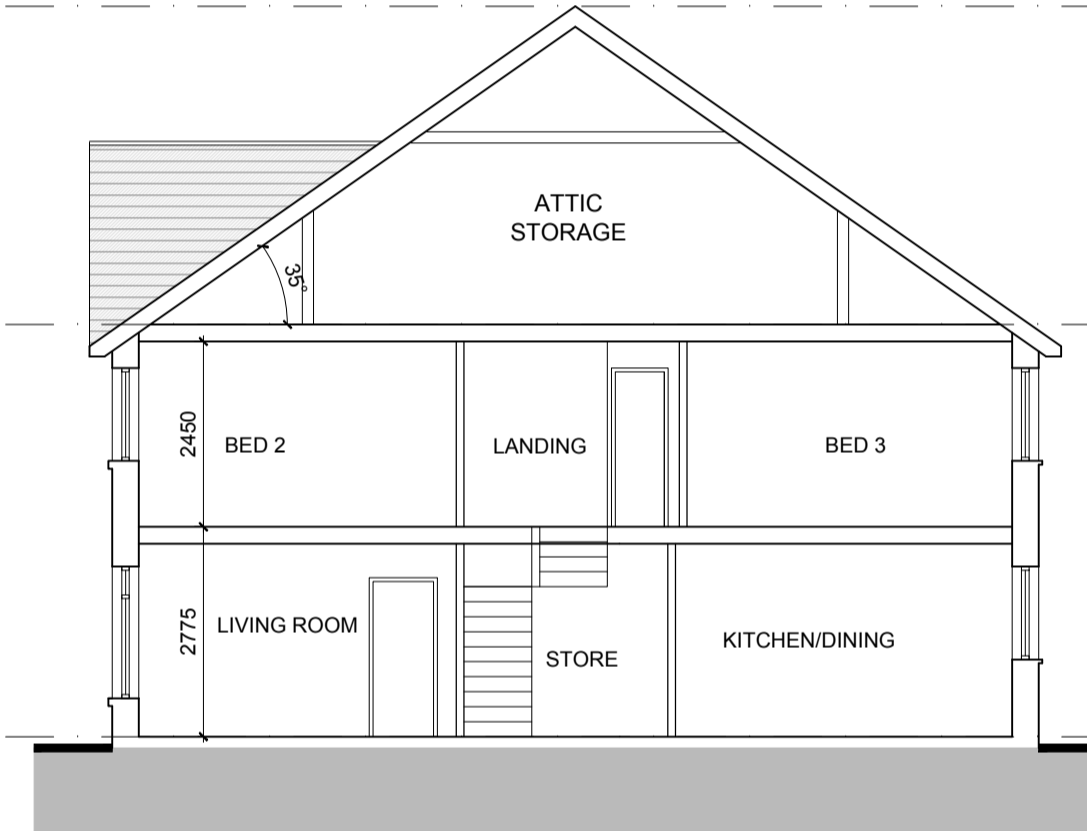
FRONT ELEVATION - House Type A-A1



SIDE ELEVATION - (Front Entrance) House Type A1



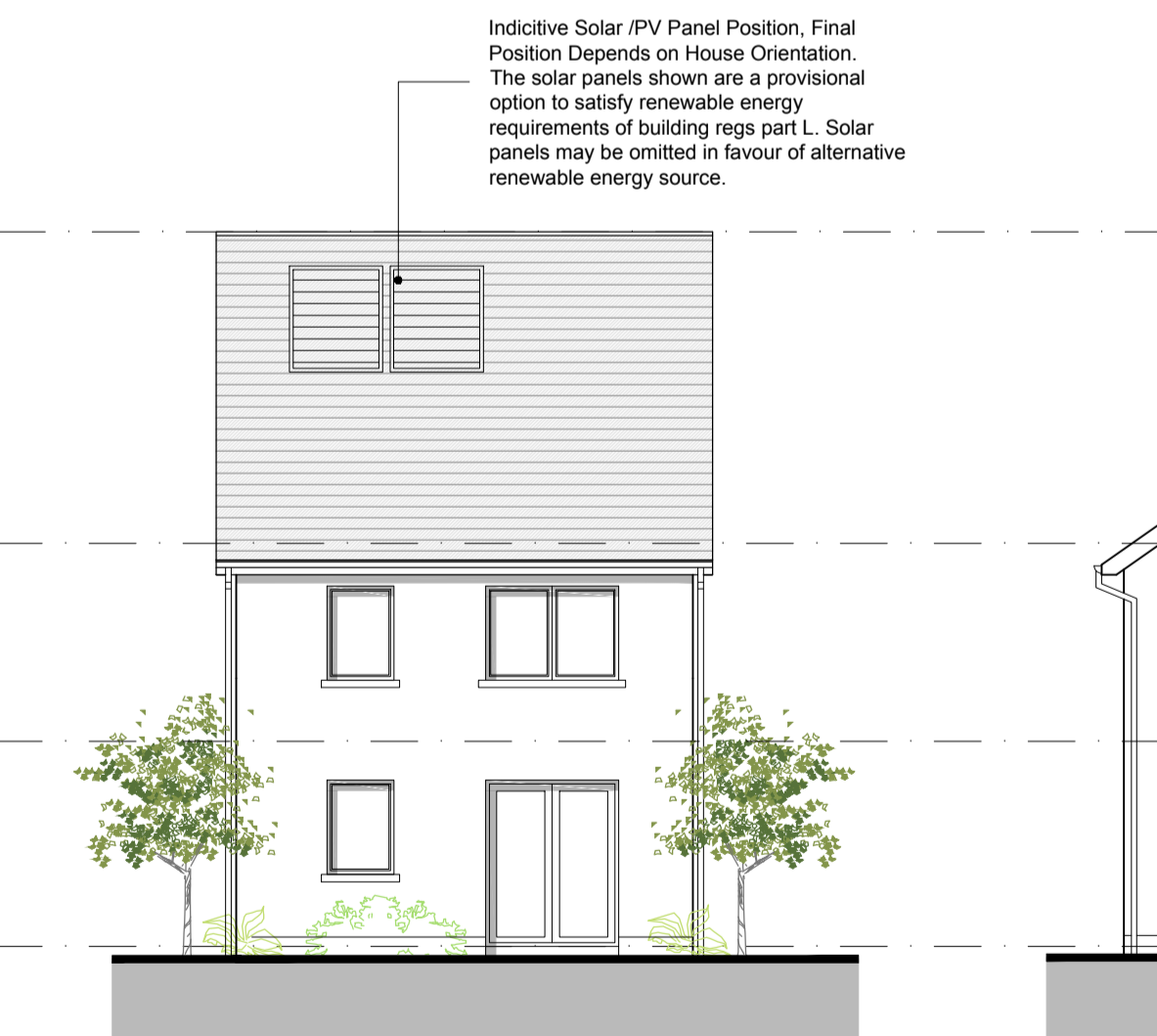
FRONT ELEVATION - House Type A2



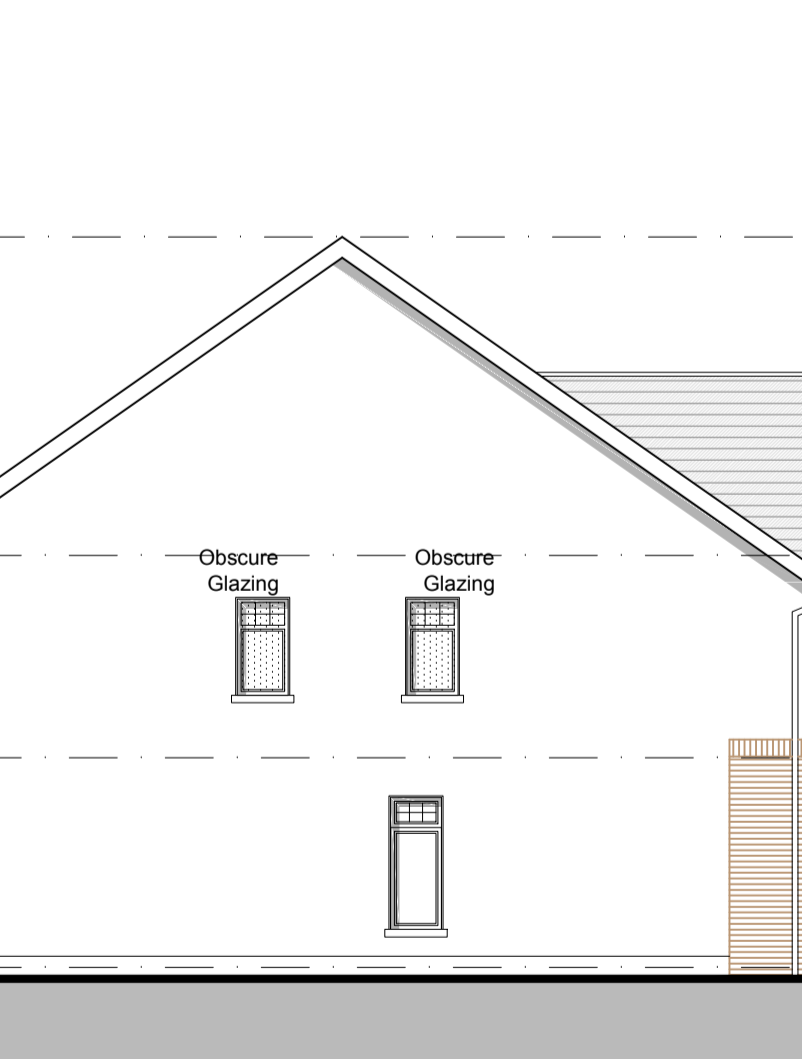
SECTION A-A



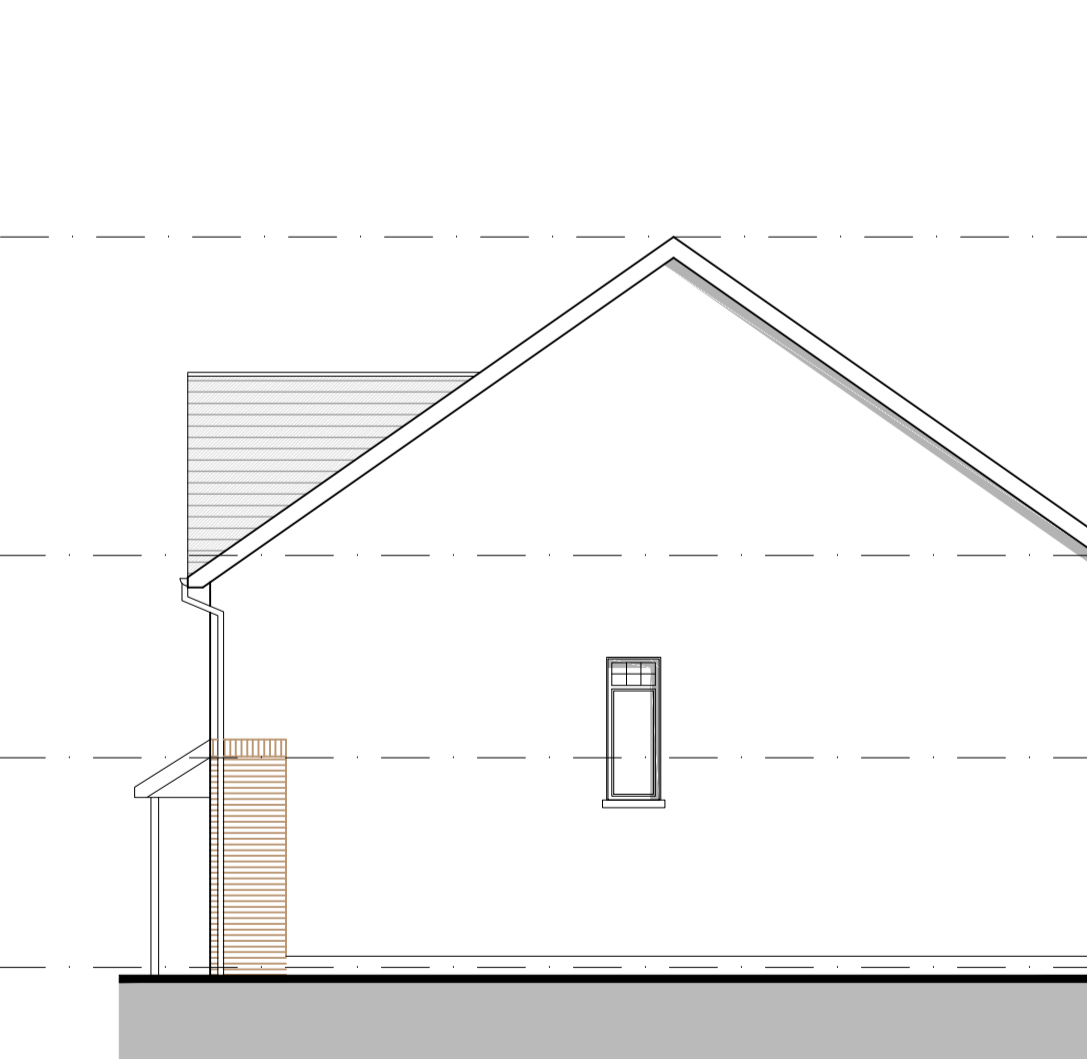
REAR ELEVATION - House Types A-A1



REAR ELEVATION - House Types A2



SIDE ELEVATION - House Type A2



SIDE ELEVATION - House Type A2

GENERAL NOTES

THIS DRAWING TO BE READ IN CONJUNCTION WITH ARCHITECT'S DRAWINGS, CONSULTANT ENGINEER'S DRAWINGS AND SPECIFICATIONS & LANDSCAPE ARCHITECT'S DRAWINGS REFER TO ARCHITECT'S SITE PLAN PL02 FOR NORTH ORIENTATION.

LEVELS GIVEN ON HOUSE TYPE DRAWINGS ARE GIVEN TO A LOCAL ABSOLUTE ZERO LEVEL. FOR SPECIFIC LEVELS DEPENDING ON INDIVIDUAL UNIT LOCATION, REFER TO ARCHITECT'S CONTEXT SECTIONS AND ENGINEER'S DRAWINGS WHERE LEVELS ARE ALL GIVEN IN RELATION TO LAND SURVEYOR'S BENCHMARK BASED ON MALIN HEAD DATUM LEVEL.

NOTES ON FINISHES:

- ROOF:** TO BE FINISHED IN SLATE OR CONCRETE ROOF TILES IN SELECTED COLOUR OR SIMILAR APPROVED.
- WALLS:** SELECTED CLAY BRICKWORK WHERE INDICATED OTHERWISE PAINTED SAND / CEMENT RENDER OR SELF COLOURED RENDER EXPRESSED BANDS AROUND EXTERNAL OPES EXPRESSED LINTOLS OVER EXTERNAL OPES WHERE INDICATED TO BE RECONSTITUTED STONE (LIGHT CREAM LIMESTONE OR GRANITE EFFECT) OR RENDER
- JOINERY:** ALL WINDOWS AND DOORS, FRAMES AND LEAVES, TO BE ALUMINIUM POWDER-COATED TO APPROVED COLOUR OR uPVC. OBSCURE GLAZING WHERE INDICATED TO SENSITIVE WINDOWS.
- RAINWATER GOODS:** GUTTERS, DOWNPIPES, AND FIXINGS TO BE uPVC OR ALUMINIUM POWDER COATED TO SELECTED COLOUR TO MATCH ROOF SLATES

* PV PANELS / SOLAR PANELS: INDICATIVE PV PANELS / SOLAR PANELS POSITION, FINAL PANEL POSITION DEPENDS ON HOUSE ORIENTATION. THE PANELS SHOWN ARE A PROVISIONAL OPTION TO SATISFY RENEWABLE ENERGY REQUIREMENTS OF BUILDING REGS PART L WHICH MAY BE OMITTED IN FAVOUR OF AN ALTERNATIVE RENEWABLE ENERGY SOURCE.

TYPE A-A1 and A2 - 4 BED - SEMI-DETACHED and DETACHED

A1	HOUSE TYPE A1 2 STOREY 4 BED	Semi-detached 126.0 SQM / 1356 SQF
-----------	------------------------------------	---------------------------------------

A2	HOUSE TYPE A2 2 STOREY 4 BED	Detached 124.9 SQM / 1344 SQF
-----------	------------------------------------	----------------------------------

NOTES:

DO NOT SCALE FROM DRAWINGS. WORK TO FIGURED DIMENSIONS ONLY. ARCHITECT TO BE NOTIFIED OF ALL DISCREPANCIES.

REVISIONS		
DATE	DESCRIPTION	No.

	PROJECT TITLE:	Foxborough, Portlaoise	DATE:	May'20	DRAWN BY:	MF
	DRAWING TITLE:	HOUSE TYPE A - A1 and A2	SCALE:	1:100	REVISION:	
		Plans, Section & Elevations	SUB NO:	18030	DRAWING NO:	PL04
		1 Gramham Street, Dublin 8, D08 A949, Ireland. Tel: 01-4788700 Fax: 01-4788711 E-Mail: info@corm.com				