

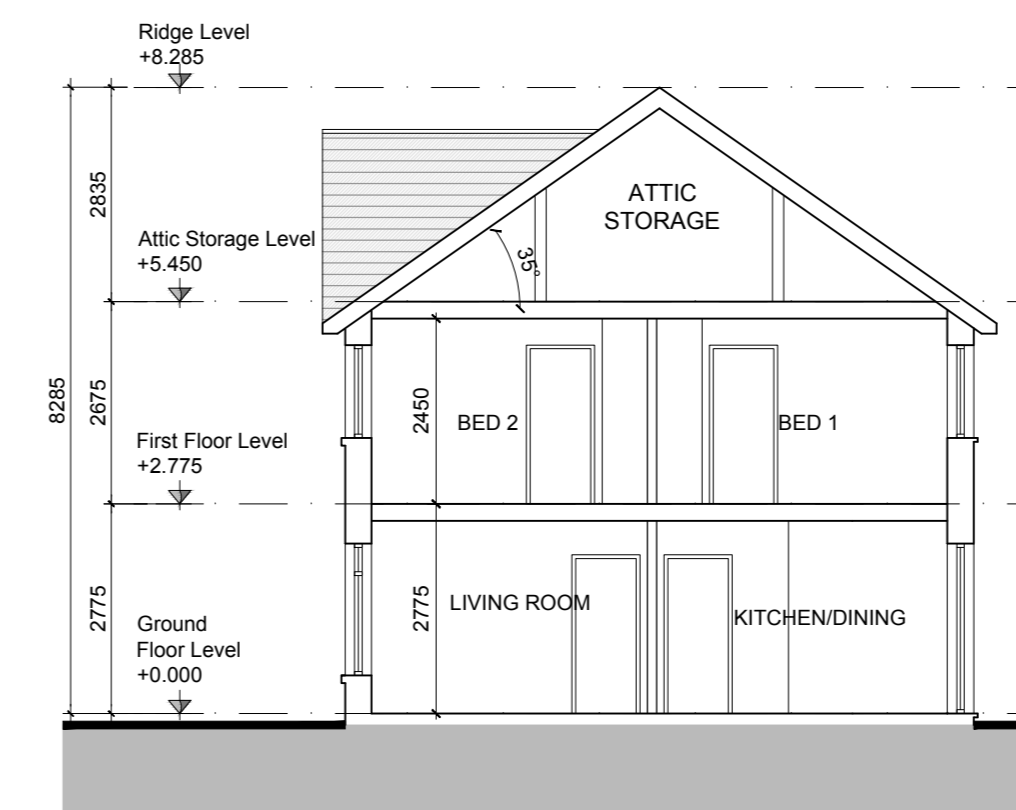
TYPE F1-F-F-F-F-F-F1 - 2 BED - TERRACED



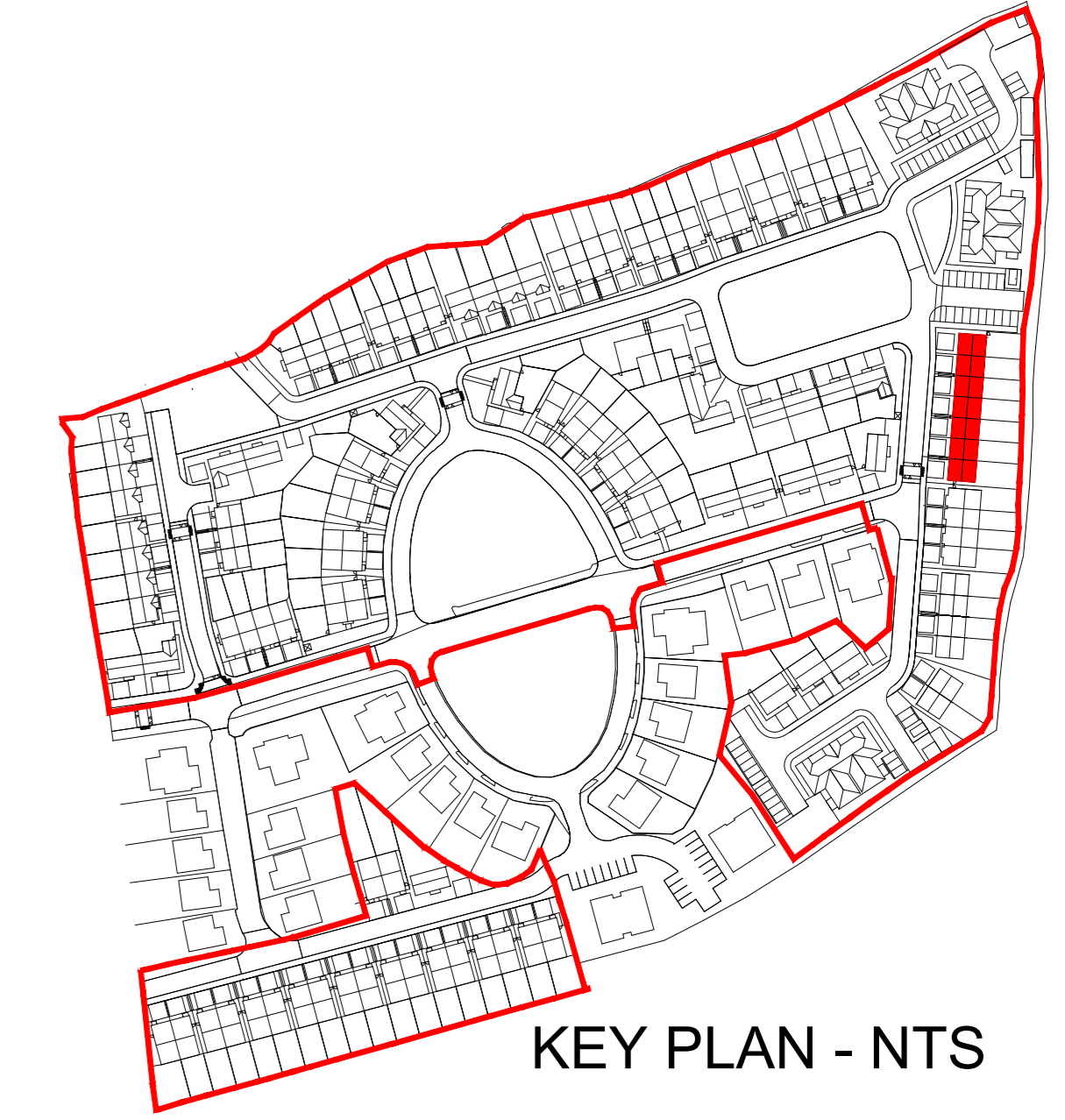
FRONT ELEVATION - House Types F1-F-F-F-F-F-F1



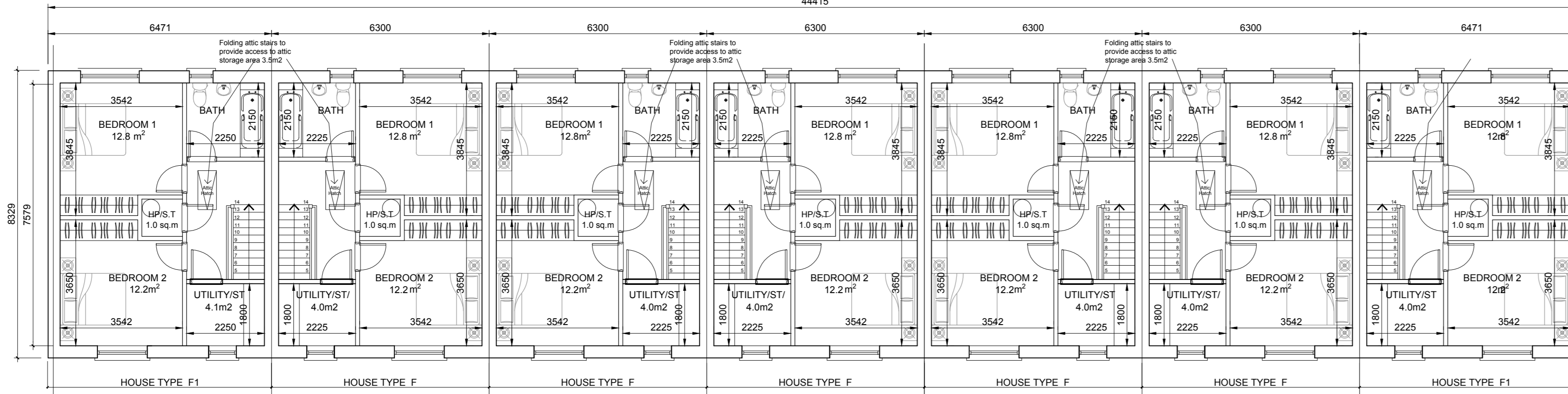
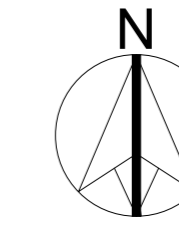
REAR ELEVATION - House Types F1-F-F-F-F-F-F1



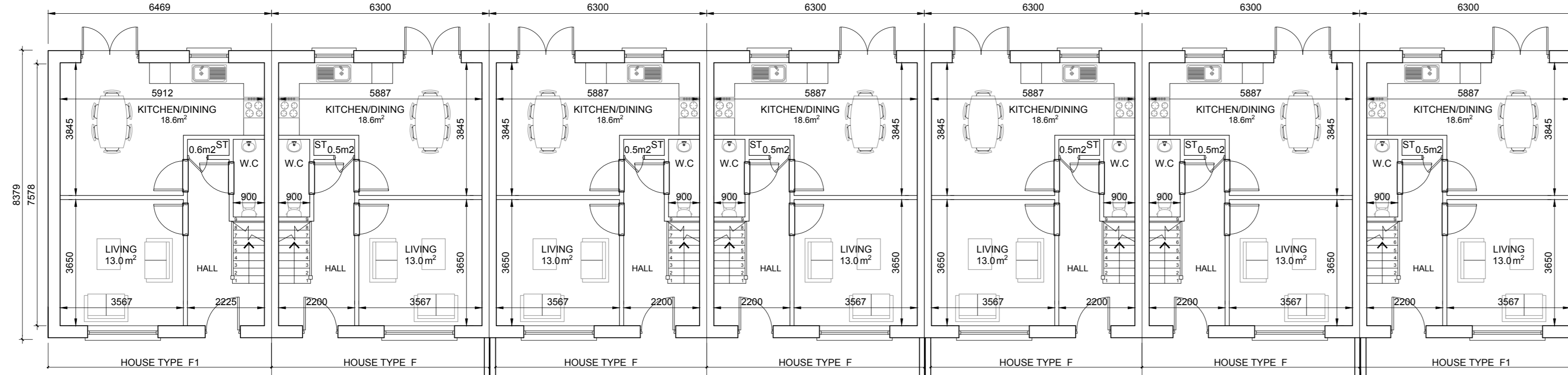
SECTION A-A



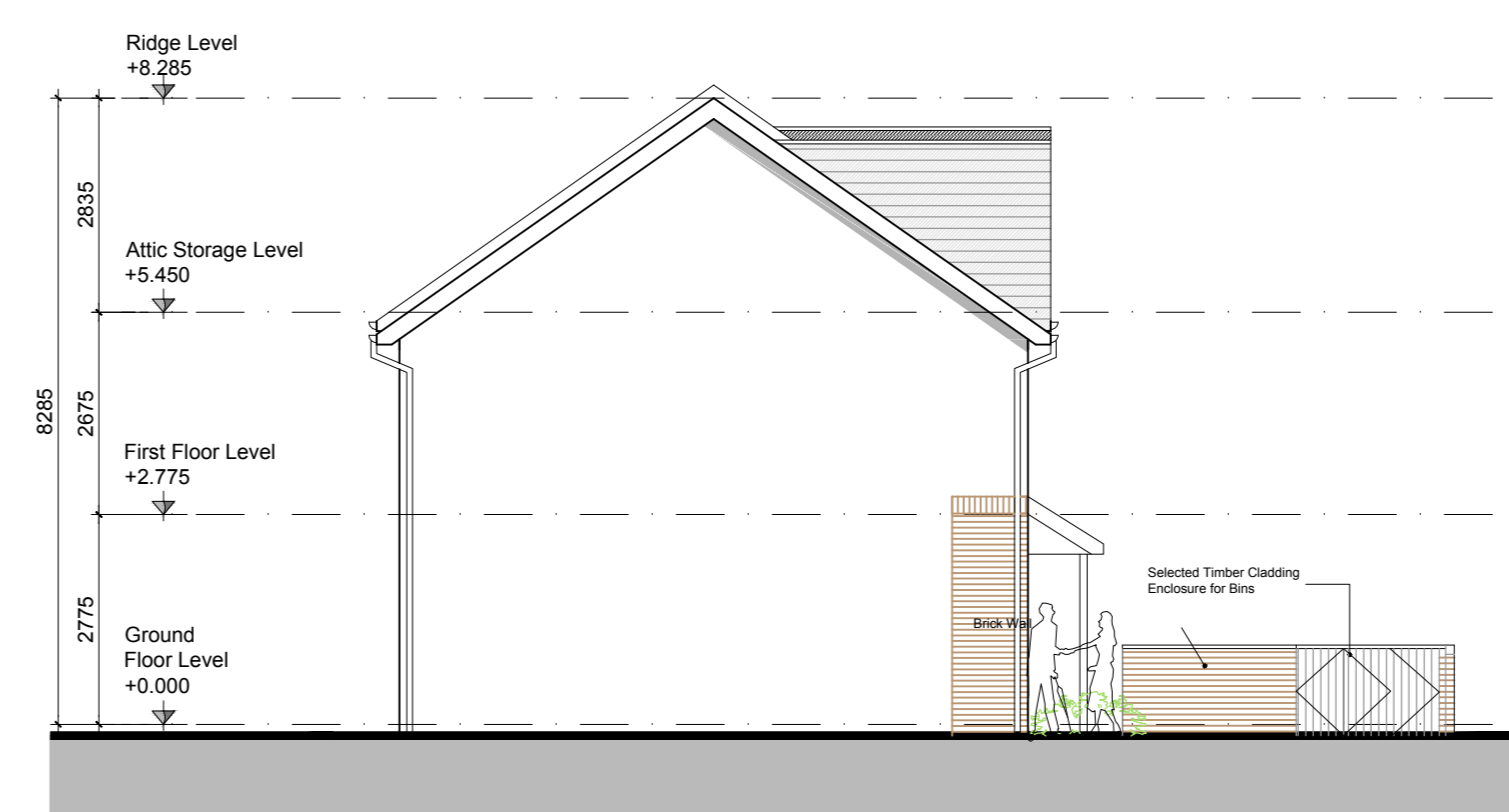
KEY PLAN - NTS



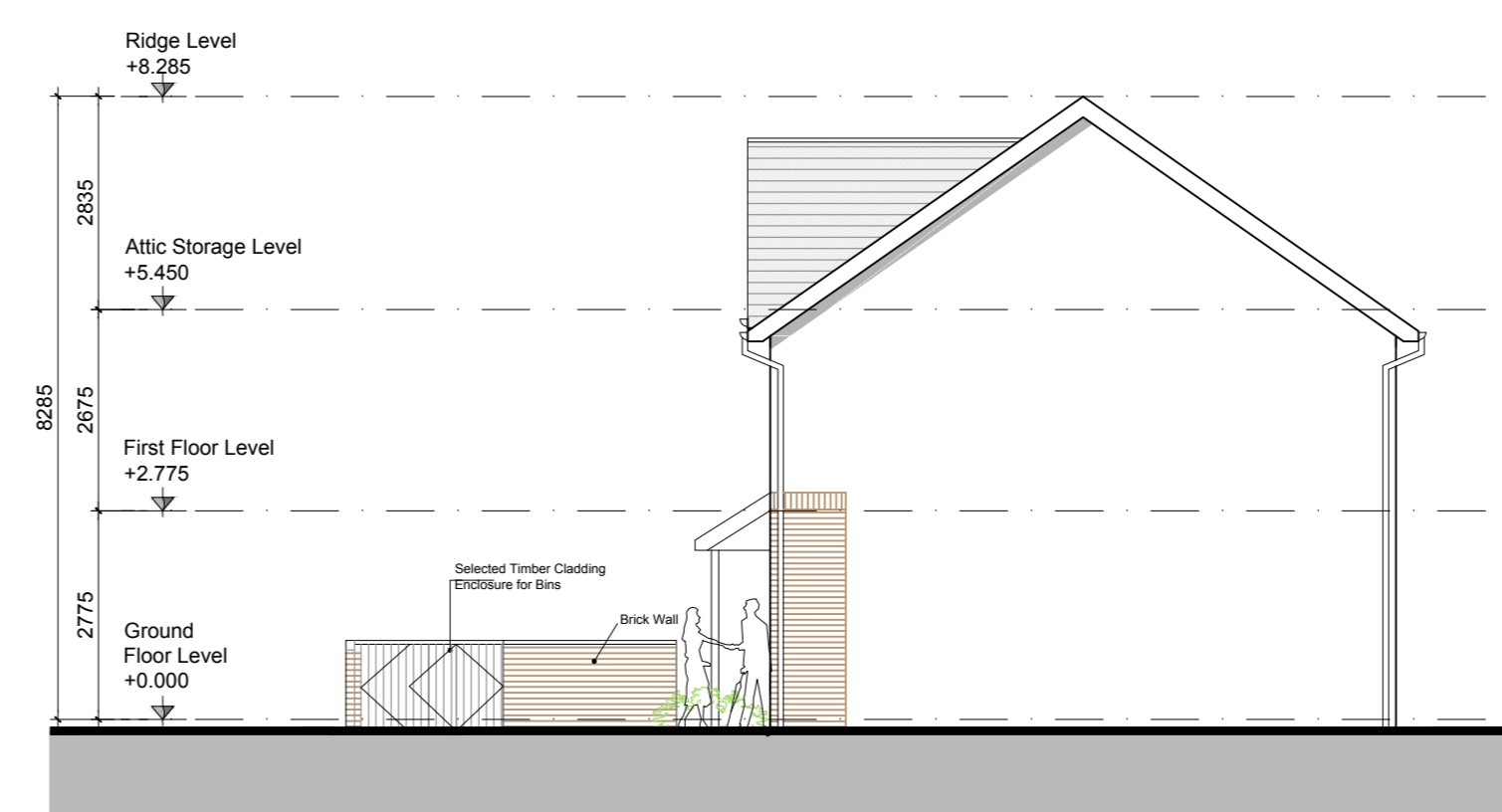
FIRST FLOOR PLAN House Type F1 45.0m² / 482 sq.ft
 FIRST FLOOR PLAN House Type F 44.8m² / 482 sq.ft
 FIRST FLOOR PLAN House Type F 44.8m² / 482 sq.ft
 FIRST FLOOR PLAN House Type F 44.8m² / 482 sq.ft
 FIRST FLOOR PLAN House Type F 44.8m² / 482 sq.ft
 FIRST FLOOR PLAN House Type F 44.8m² / 482 sq.ft
 FIRST FLOOR PLAN House Type F1 45.0m² / 482 sq.ft



GROUND FLOOR PLAN House Type F1 45.0m² / 484 sq.ft
 GROUND FLOOR PLAN House Type F 44.8m² / 482 sq.ft
 GROUND FLOOR PLAN House Type F 44.8m² / 482 sq.ft
 GROUND FLOOR PLAN House Type F 44.8m² / 482 sq.ft
 GROUND FLOOR PLAN House Type F 44.8m² / 482 sq.ft
 GROUND FLOOR PLAN House Type F 44.8m² / 482 sq.ft
 GROUND FLOOR PLAN House Type F1 45.0m² / 482 sq.ft



SIDE ELEVATION (EAST) - House Type F1
 Mirrored where applicable



SIDE ELEVATION (WEST) - House Type F1
 Mirrored where applicable

GENERAL NOTES

THIS DRAWING TO BE READ IN CONJUNCTION WITH ARCHITECTS DRAWINGS, CONSULTANT ENGINEERS DRAWINGS AND SPECIFICATIONS & LANDSCAPE ARCHITECTS DRAWINGS. REFER TO ARCHITECT'S SITE PLAN PL02 FOR NORTH ORIENTATION. LEVELS GIVEN ON HOUSE TYPE DRAWINGS ARE GIVEN TO LOCAL ABSOLUTE ZERO LEVEL. FOR SPECIFIC LEVELS DEPENDING ON INDIVIDUAL UNIT LOCATION. REFER TO ARCHITECT'S CONTEXT SECTIONS AND ENGINEERS DRAWINGS WHERE LEVELS ARE ALL GIVEN IN RELATION TO LAND SURVEYOR'S BENCHMARK BASED ON MALIN HEAD DATUM LEVEL.

NOTES ON FINISHES:

- ROOF: TO BE FINISHED IN SLATE OR CONCRETE ROOF TILES IN SELECTED COLOUR OR SIMILAR APPROVED.
- WALLS: SELECTED CLAY BRICKWORK WHERE INDICATED OTHERWISE PAINTED SAND/CEMENT RENDER OR SELF COLOURED RENDER. EXPRESSED BANDS AROUND EXTERNAL OPES/EXPRESSED LINTELS OVER EXTERNAL OPES WHERE INDICATED TO BE RECONSTITUTED STONE/LIGHT CREAM LIMESTONE OR GRANITE EFFECT RENDER.
- JOINERY: ALL WINDOWS AND DOORS, FRAMES AND LEAVES, TO BE ALUMINIUM POWDER-COATED TO APPROVED COLOUR OR UPVC. OBSCURE GLAZING WHERE INDICATED TO SENSITIVE WINDOWS.
- RAINWATER GOODS: GUTTERS, DOWNPIPES AND FINISHS TO BE UPVC OR ALUMINIUM POWDER-COATED TO SELECTED COLOUR TO MATCH ROOF SLATES.
- * PV PANELS / SOLAR PANELS: INDICATIVE PV PANELS / SOLAR PANELS POSITION, FINAL PANEL POSITION DEPENDS ON HOUSE ORIENTATION. THE PANELS SHOWN ARE A PROVISIONAL OPTION TO SATISFY RENEWABLE ENERGY REQUIREMENTS OF BUILDING REGS PART L WHICH MAY BE OMITTED IN FAVOUR OF AN ALTERNATIVE RENEWABLE ENERGY SOURCE.

TYPE F1-F-F-F-F-F-F1 - 2 BED - TERRACED

F	HOUSE TYPE F 2 STOREY 2 BED	Mid-Terrace 89.6 SQM / 965 SQF
----------	-----------------------------------	-----------------------------------

F1	HOUSE TYPES F1 2 STOREY 2 BED	End of Terrace 90 SQM / 968 SQF
-----------	-------------------------------------	------------------------------------

NOTES:

DO NOT SCALE FROM DRAWINGS. WORK TO FIGURED DIMENSIONS ONLY. ARCHITECT TO BE NOTIFIED OF ALL DISCREPANCIES.

DATE	DESCRIPTION	NO.

	PROJECT TITLE	DATE	DRAWN BY
	Foxburrow, Portlaoise	May 20	CL
	DRAWING TITLE	SCALE	REVISION
	House Type F1-F-F-F-F-F-F1 Plans, Section & Elevations	1:100	