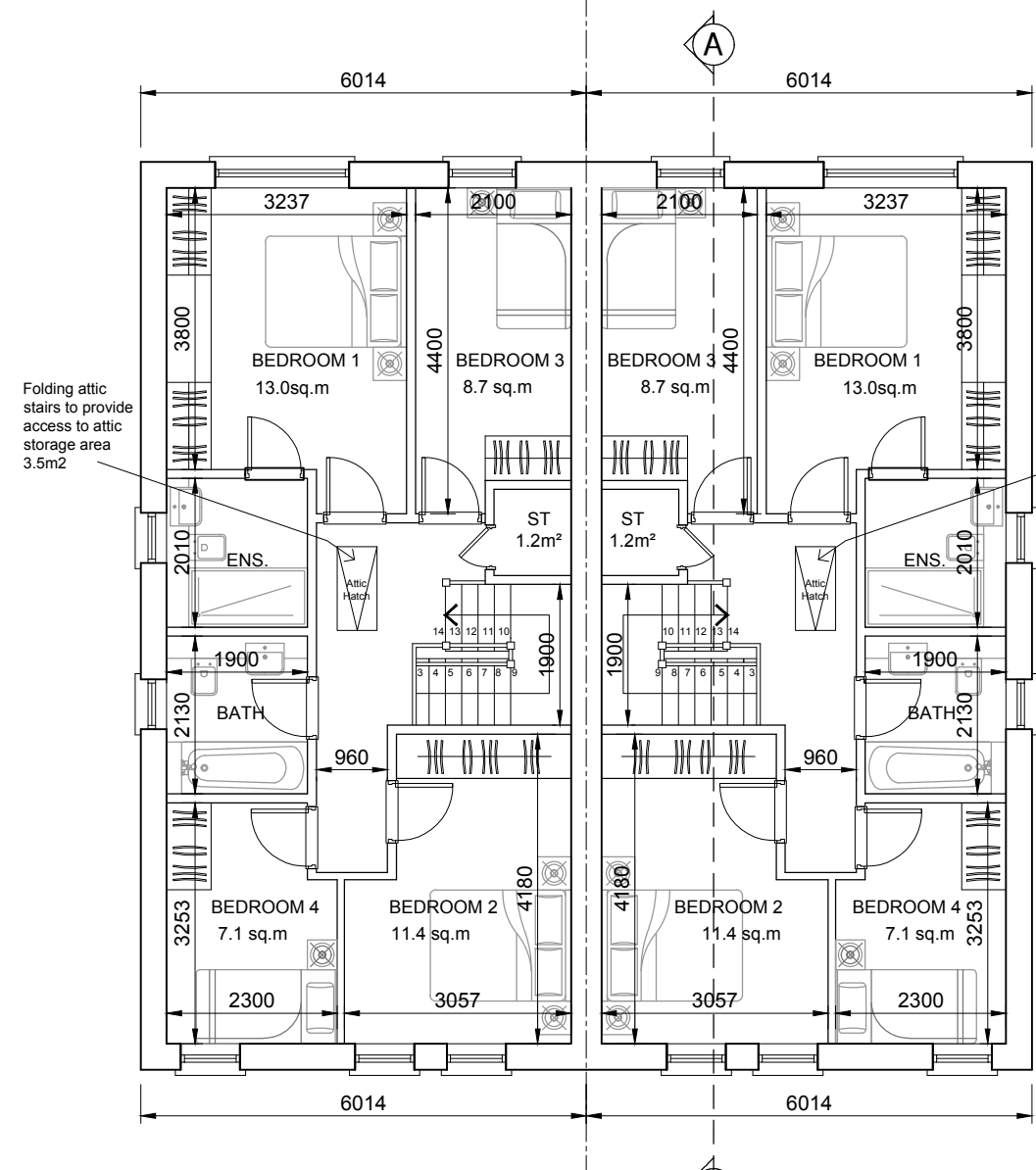


**HOUSE TYPE A-A
GROUND FLOOR PLAN (SEMI-DETACHED)**
61.6 m² / 663 sq.ft
OA 124.6m² / 1341 sq.ft

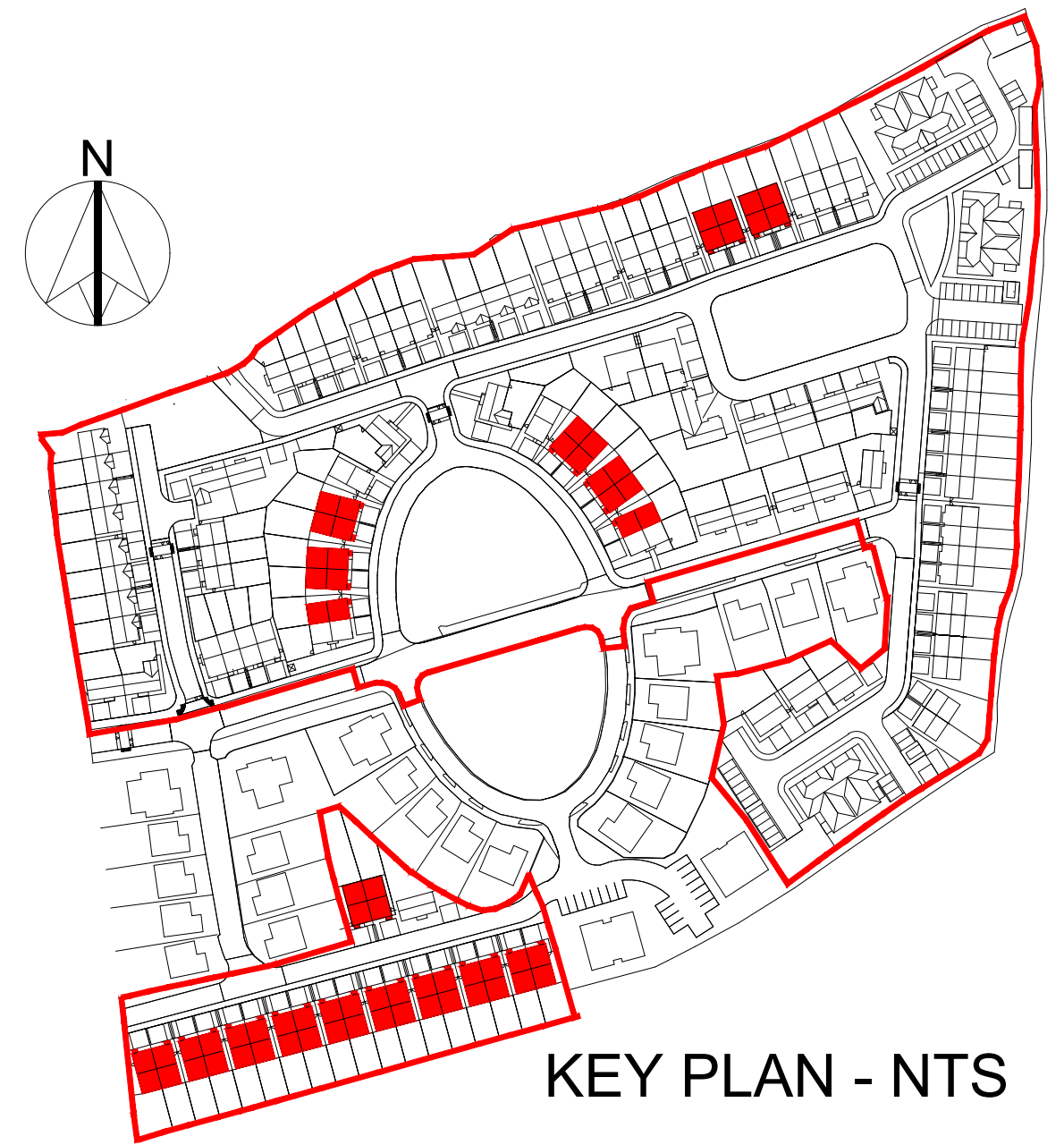
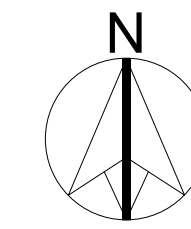
Indicative Solar (PV) Panel Position, Final Position Depends on House Orientation. The solar panels shown are a provisional option to satisfy renewable energy requirements of building regs part L. Solar panels may be omitted in favour of alternative renewable energy source.



**HOUSE TYPE A-A
FIRST FLOOR PLAN**
63.0 m² / 678 sq.ft

Folding attic stairs to provide access to attic storage area 3.5m²

Folding attic stairs to provide access to attic storage area 3.5m²



KEY PLAN - NTS

GENERAL NOTES

THIS DRAWING TO BE READ IN CONJUNCTION WITH ARCHITECT'S DRAWINGS, CONSULTANT ENGINEER'S DRAWINGS AND SPECIFICATIONS & LANDSCAPE ARCHITECTS DRAWINGS REFER TO ARCHITECT'S SITE PLAN PL02 FOR NORTH ORIENTATION.

LEVELS GIVEN ON HOUSE TYPE DRAWINGS ARE GIVEN TO A LOCAL ABSOLUTE ZERO LEVEL. FOR SPECIFIC LEVELS DEPENDING ON INDIVIDUAL UNIT LOCATION, REFER TO ARCHITECT'S CONTEXT SECTIONS AND ENGINEER'S DRAWINGS WHERE LEVELS ARE ALL GIVEN IN RELATION TO LAND SURVEYOR'S BENCHMARK BASED ON MALIN HEAD DATUM LEVEL.

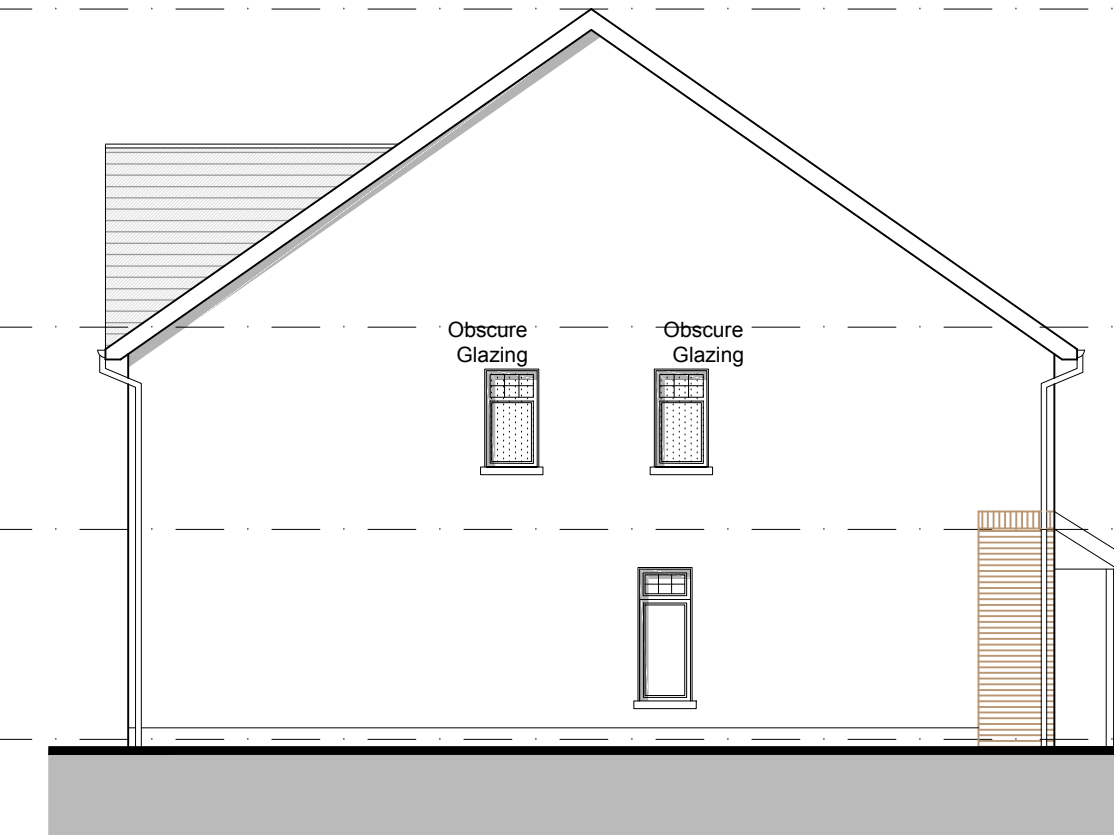
NOTES ON FINISHES:

- ROOF:** TO BE FINISHED IN SLATE OR CONCRETE ROOF TILES IN SELECTED COLOUR OR SIMILAR APPROVED.
- WALLS:** SELECTED CLAY BRICKWORK WHERE INDICATED OTHERWISE PAINTED SAND / CEMENT RENDER OR SELF COLOURED RENDER EXPRESSED BANDS AROUND EXTERNAL OPES EXPRESSED LINTOLS OVER EXTERNAL OPES WHERE INDICATED TO BE RECONSTITUTED STONE (LIGHT CREAM LIMESTONE OR GRANITE EFFECT) OR RENDER
- JOINERY:** ALL WINDOWS AND DOORS, FRAMES AND LEAVES, TO BE ALUMINIUM POWDER-COATED TO APPROVED COLOUR OR uPVC. OBSCURE GLAZING WHERE INDICATED TO SENSITIVE WINDOWS.
- RAINWATER GOODS:** GUTTERS, DOWNPIPES, AND FIXINGS TO BE uPVC OR ALUMINIUM POWDER COATED TO SELECTED COLOUR TO MATCH ROOF SLATES

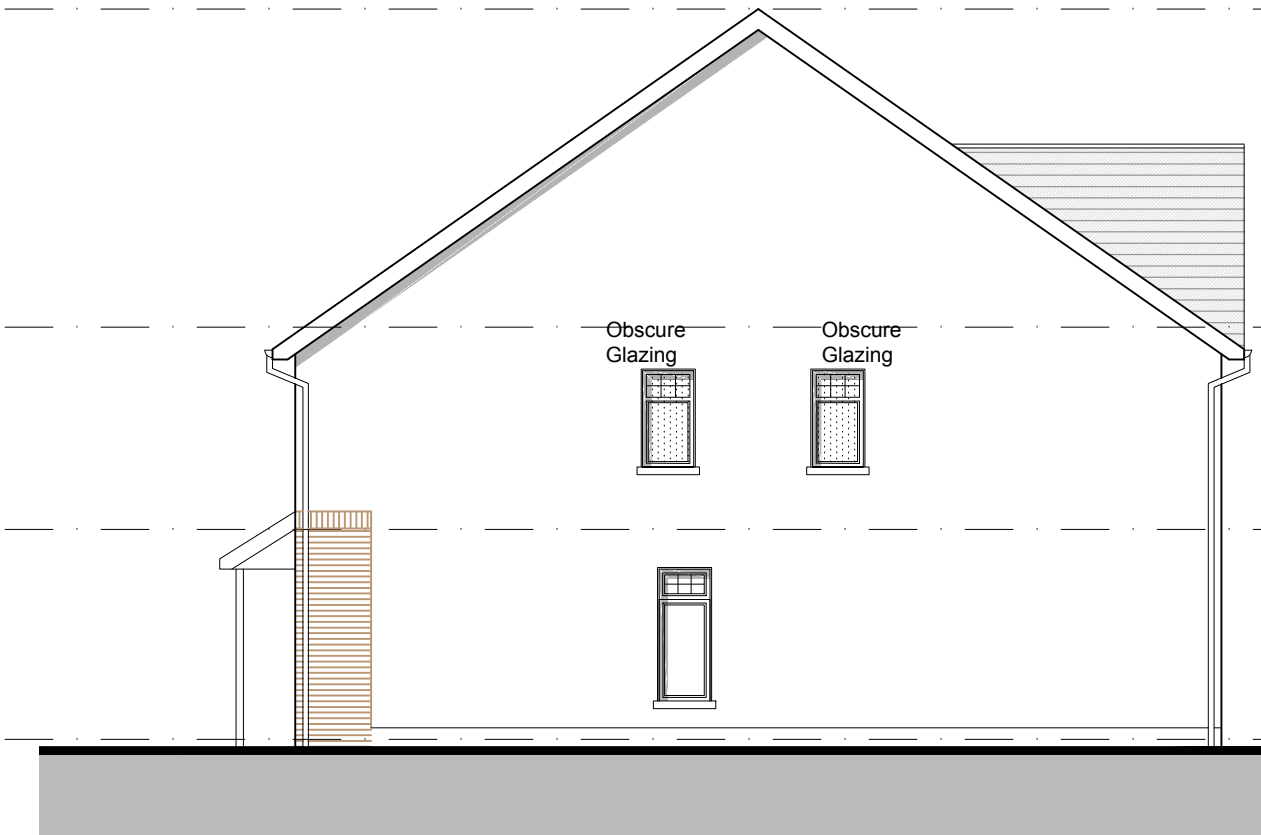
★ PV PANELS / SOLAR PANELS: INDICATIVE PV PANELS / SOLAR PANELS POSITION, FINAL PANEL POSITION DEPENDS ON HOUSE ORIENTATION. THE PANELS SHOWN ARE A PROVISIONAL OPTION TO SATISFY RENEWABLE ENERGY REQUIREMENTS OF BUILDING REGS PART L WHICH MAY BE OMITTED IN FAVOUR OF AN ALTERNATIVE RENEWABLE ENERGY SOURCE.



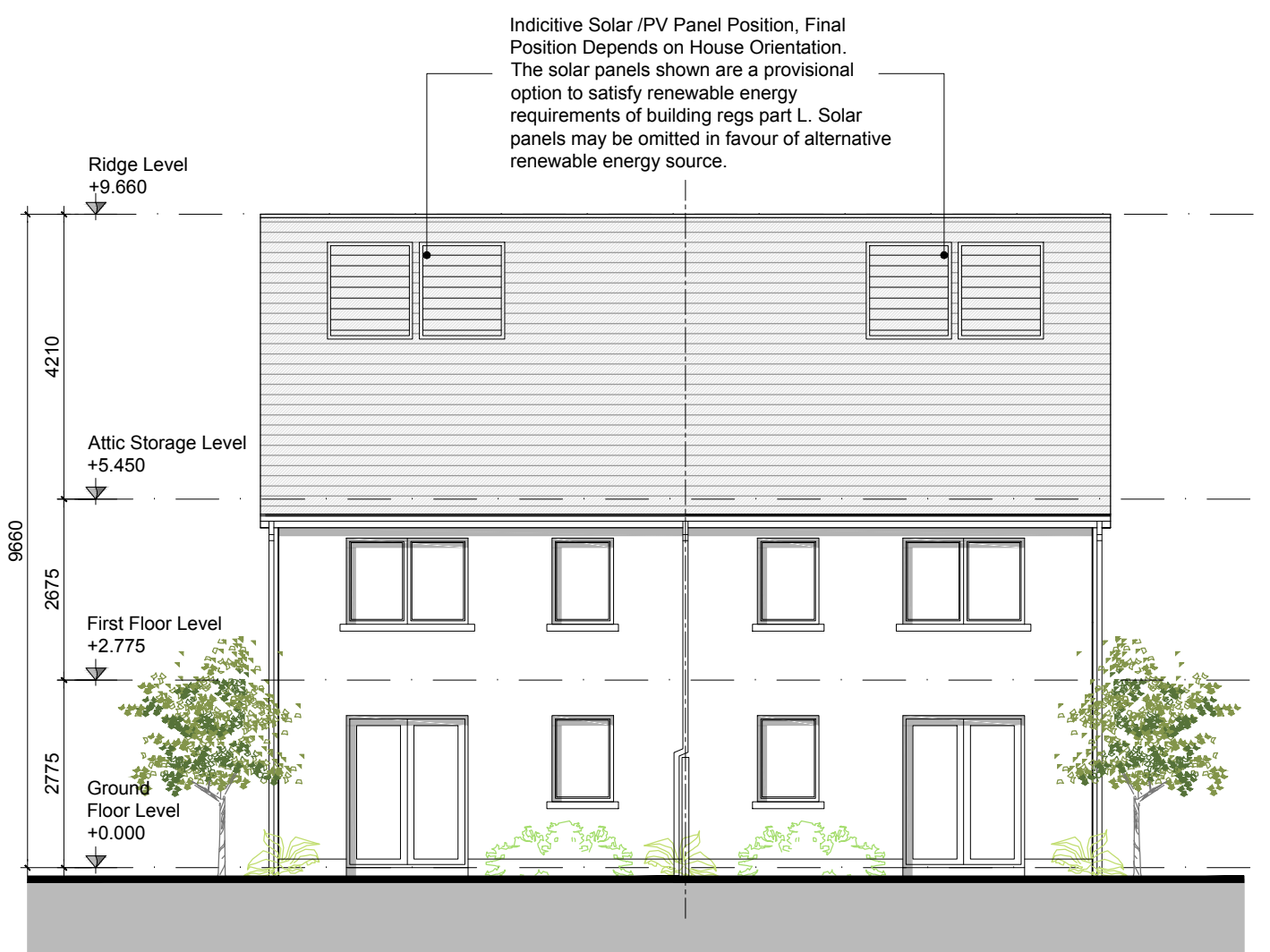
FRONT ELEVATION - House Type A-A



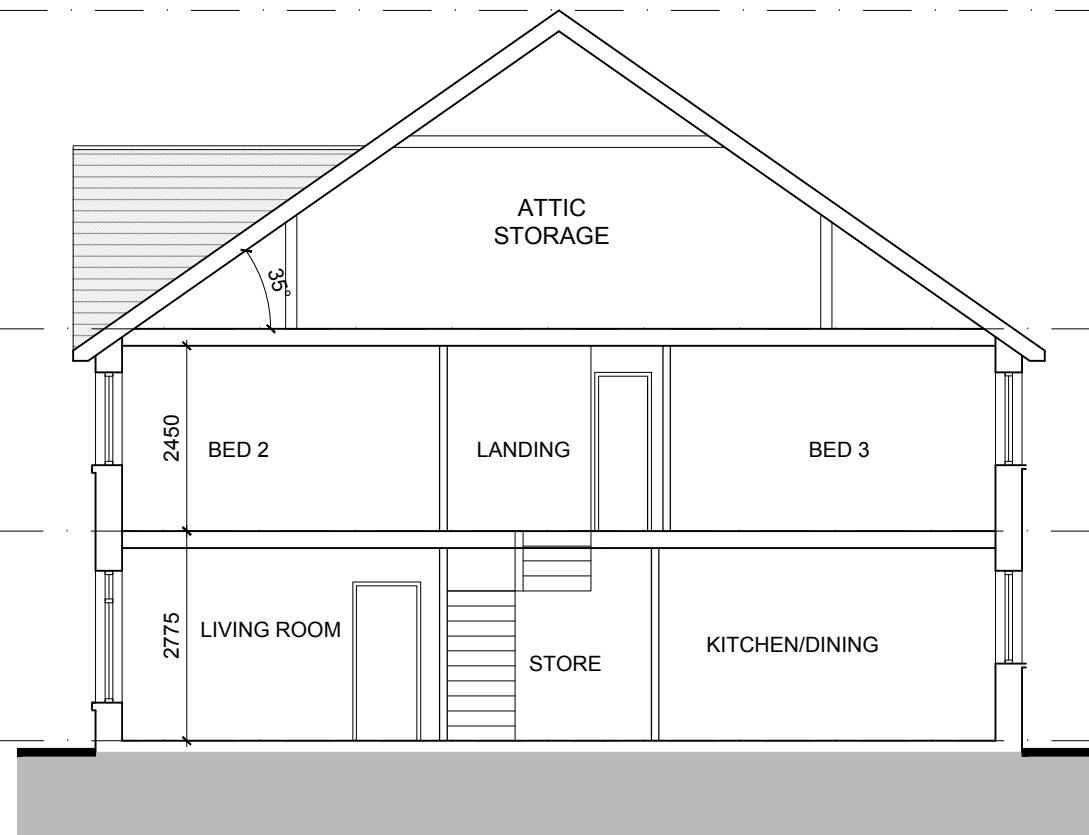
SIDE ELEVATION - House Type A



SIDE ELEVATION - House Type A



REAR ELEVATION - House Types A-A



SECTION A-A

Indicative Solar (PV) Panel Position, Final Position Depends on House Orientation. The solar panels shown are a provisional option to satisfy renewable energy requirements of building regs part L. Solar panels may be omitted in favour of alternative renewable energy source.

TYPE A-A - 4 BED - SEMI-DETACHED

NOTES:

DO NOT SCALE FROM DRAWINGS. WORK TO FIGURED DIMENSIONS ONLY. ARCHITECT TO BE NOTIFIED OF ALL DISCREPANCIES.

REVISIONS		
DATE	DESCRIPTION	No.

A	HOUSE TYPE A 2 STOREY 4 BED	Semi-detached 124.6 SQM / 1341 SQF
----------	-----------------------------------	---------------------------------------

<p>M C O R M M CROSSAN O'ROURKE MANNING ARCHITECTS</p>	PROJECT TITLE: Foxborough, Portlaoise	DATE: May'20	DRAWN BY: MF
	DRAWING TITLE: HOUSETYPE A-A Plans, Section & Elevations	SCALE: 1:100	REVISION:
	1 Grantham Street, Dublin 8, D08 A49Y, Ireland. Tel: 01-4788700 Fax: 01-4788711 E-Mail: info@mcorm.com	JOB NO: 18030	DRAWING NO: PL03