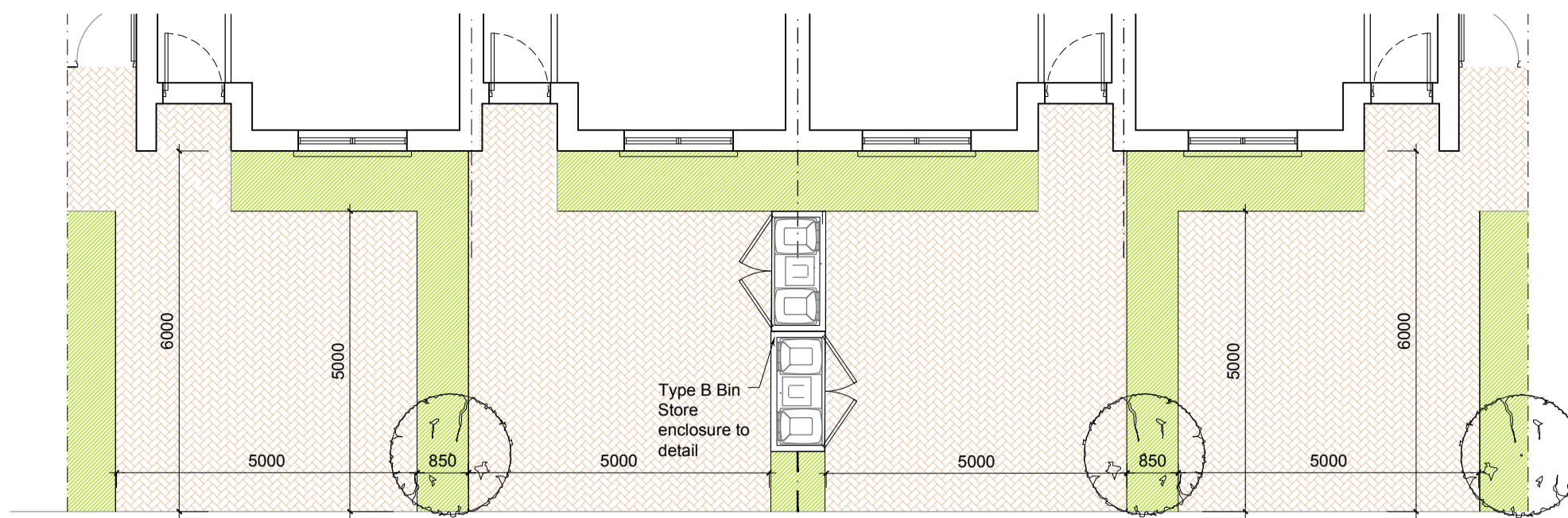
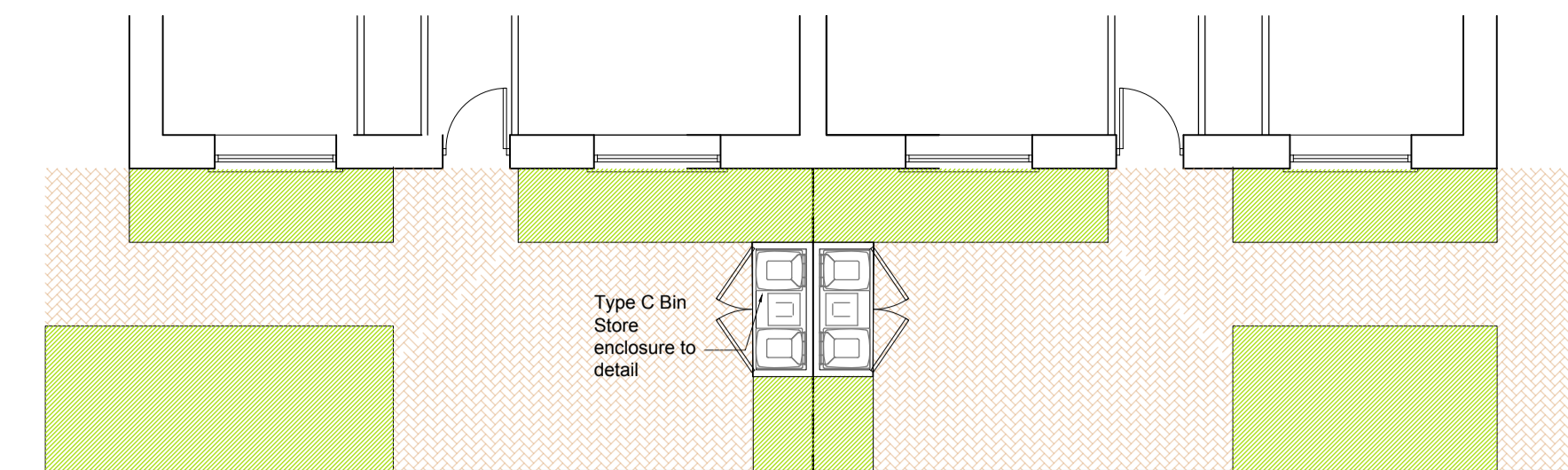


**TYPICAL BIN STORE DETAIL 1:100
FOR 3 TERRACE B1-B-B1**



**TYPICAL BIN STORE DETAIL 1:100
FOR 4 TERRACE B1-B-B-B1**



**TYPICAL BIN STORE DETAIL 1:100
FOR MAISONETTE UNITS TYPE M**

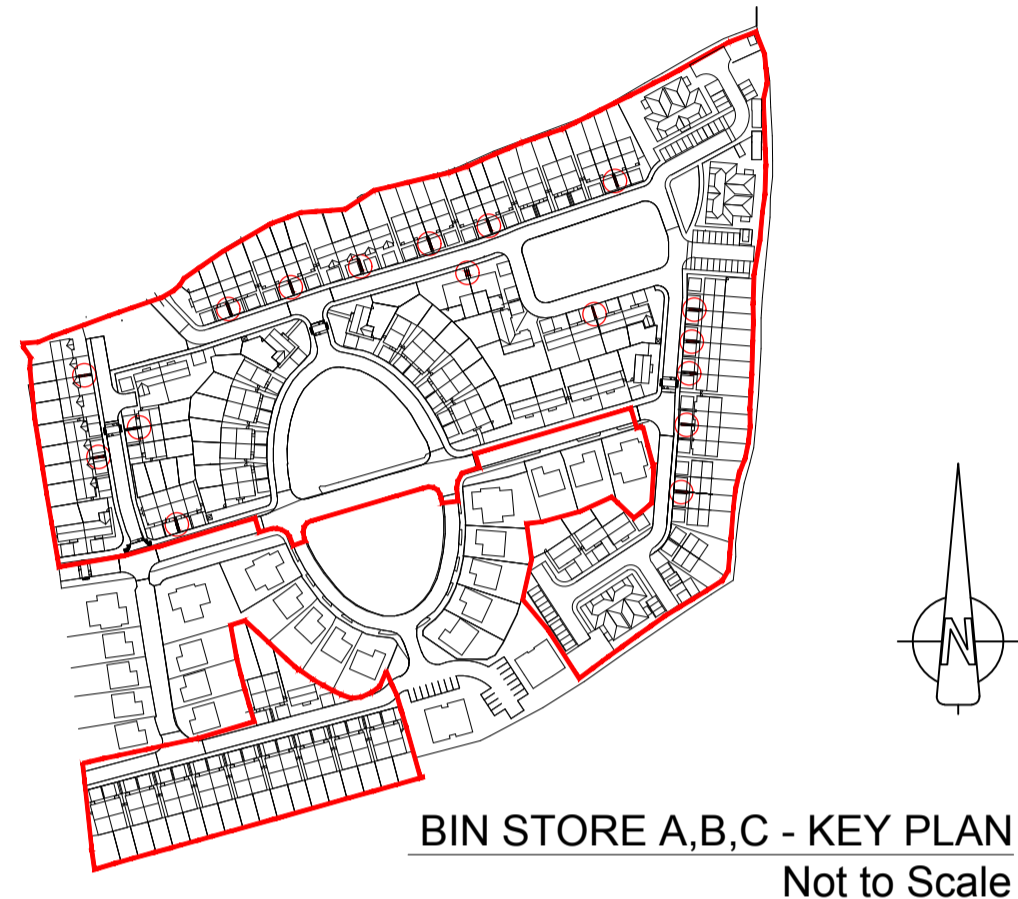
GENERAL NOTES

THIS DRAWING TO BE READ IN CONJUNCTION WITH ARCHITECT'S DRAWINGS, CONSULTANT ENGINEER'S DRAWINGS AND SPECIFICATIONS & LANDSCAPE ARCHITECTS DRAWINGS
REFER TO ARCHITECT'S SITE PLAN PL02 FOR NORTH ORIENTATION.

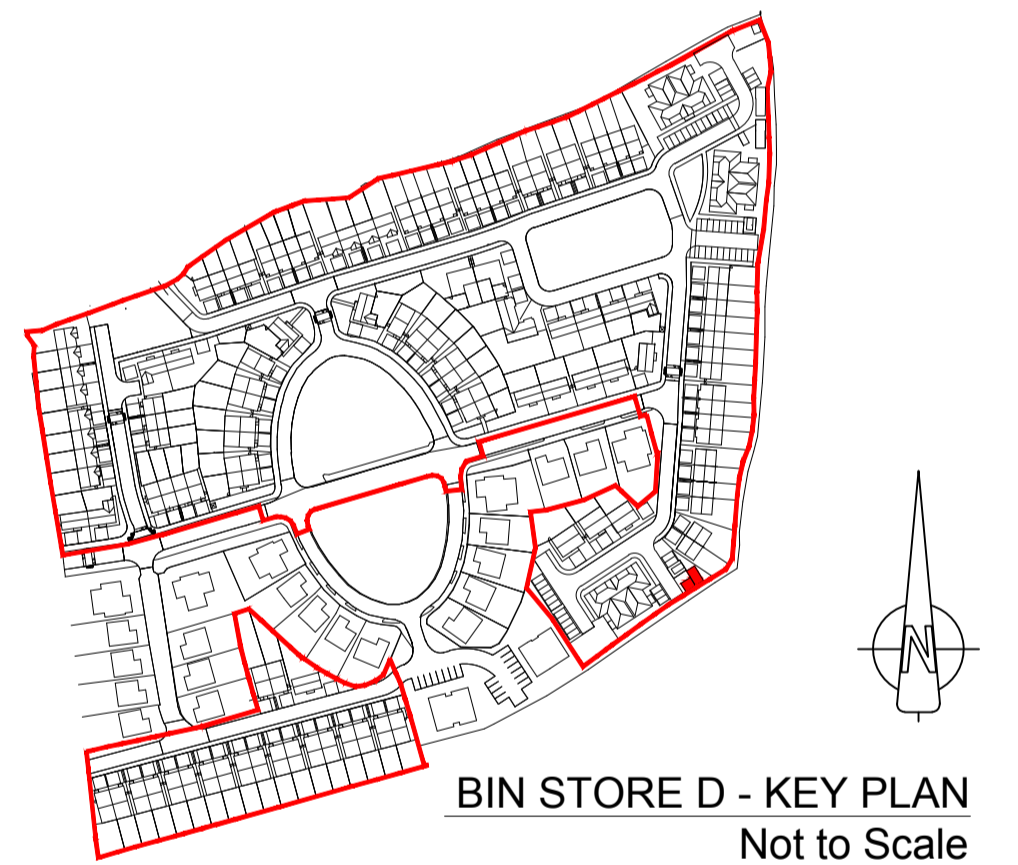
LEVELS GIVEN ON HOUSE TYPE DRAWINGS ARE GIVEN TO A LOCAL ABSOLUTE ZERO LEVEL. FOR SPECIFIC LEVELS DEPENDING ON INDIVIDUAL UNIT LOCATION, REFER TO ARCHITECT'S CONTEXT SECTIONS AND ENGINEER'S DRAWINGS WHERE LEVELS ARE ALL GIVEN IN RELATION TO LAND SURVEYOR'S BENCHMARK BASED ON MALIN HEAD DATUM LEVEL.

OUTLINE SPECIFICATION:

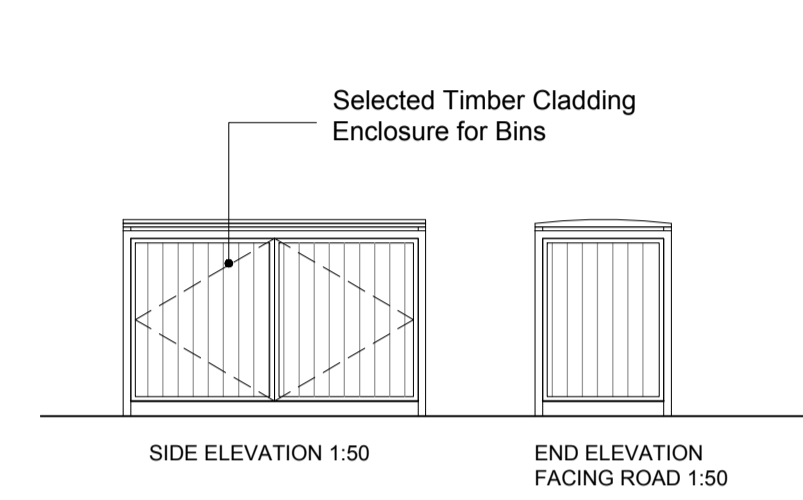
- BRICK WALLS TO SELECTED COLOUR TO BIN STORE WALLS.
- 50 X50MM HARDWOOD TIMBER LATTES TO BICYCLE STORE WALLS AND HIGH LEVEL BIN STORE ENCLOSURE
- LOUVRED TIMBER / ALUMINIUM DOORS TO BIN STORE.
- TIMBER/METAL POSTS TO SUPPORT TIMBER ROOF STRUCTURE OVER BIN AND BICYCLE STORE AND COMPLETED WITH SINGLE PLY WEATHERING MEMBRANE.
- ENCLOSURE TO BE DRAINED AND PROVIDED WITH A POWER AND WATER SUPPLY



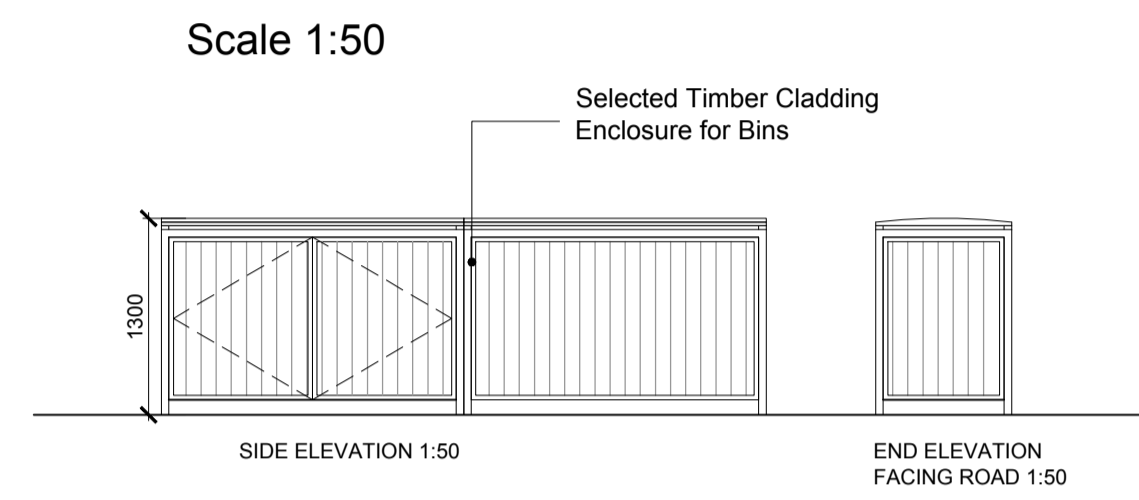
**BIN STORE A,B,C - KEY PLAN
Not to Scale**



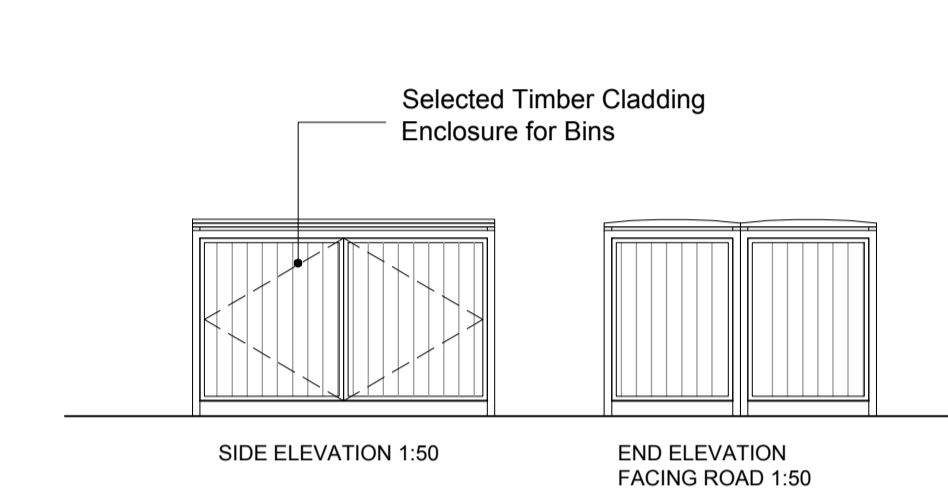
**BIN STORE D - KEY PLAN
Not to Scale**



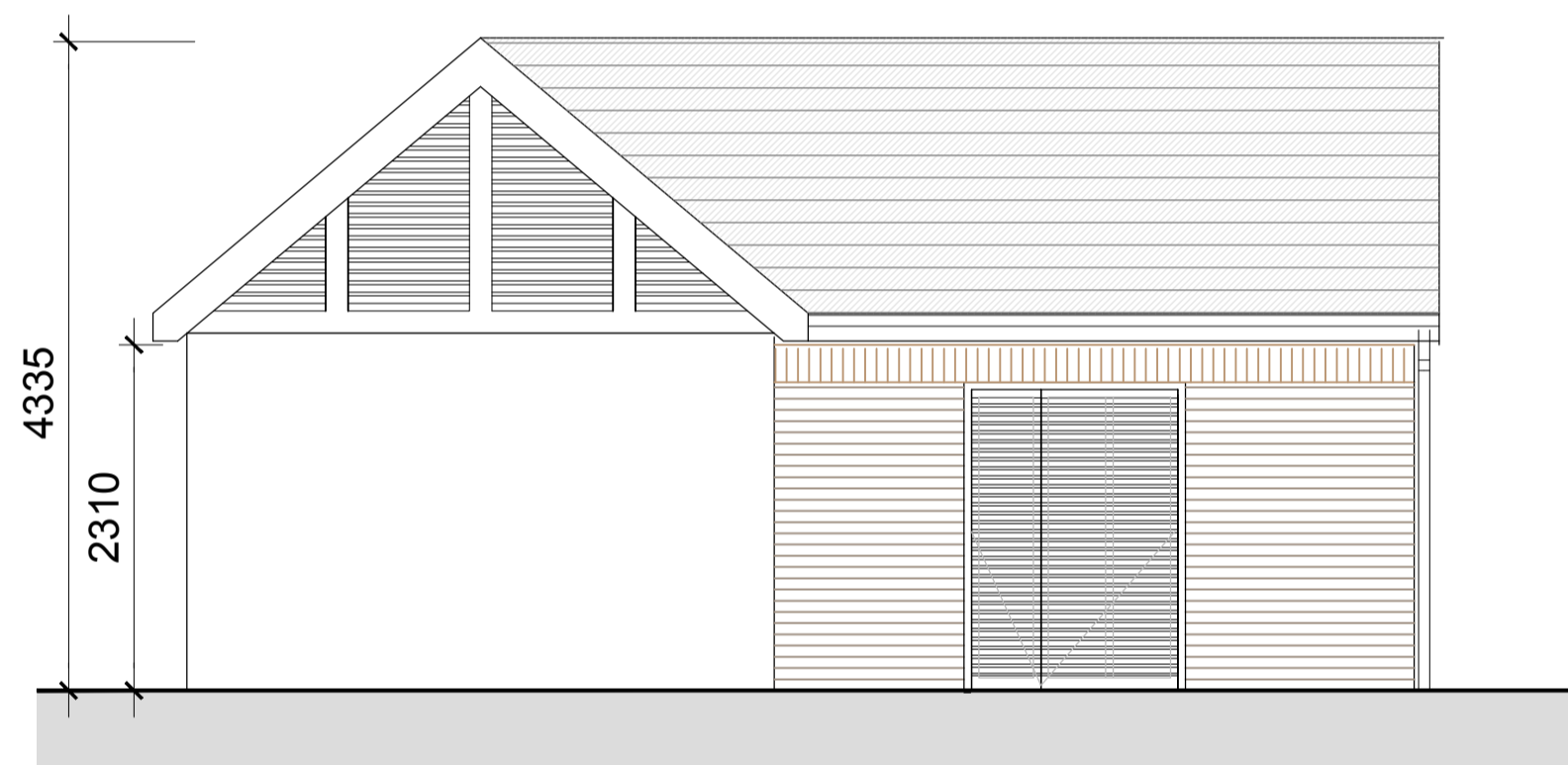
**TYPE A BIN STORE
Scale 1:50**



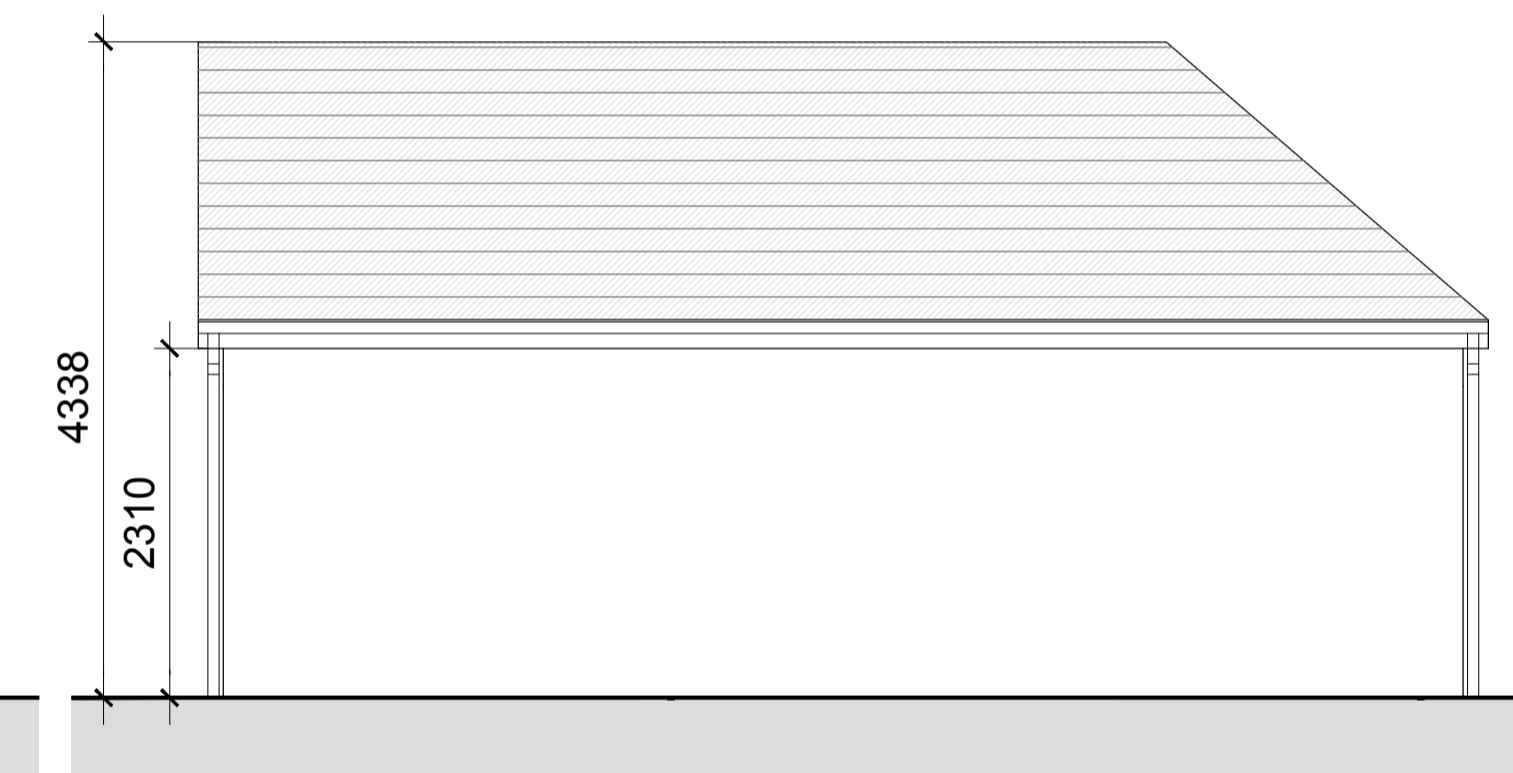
**TYPE B BIN STORE
Scale 1:50**



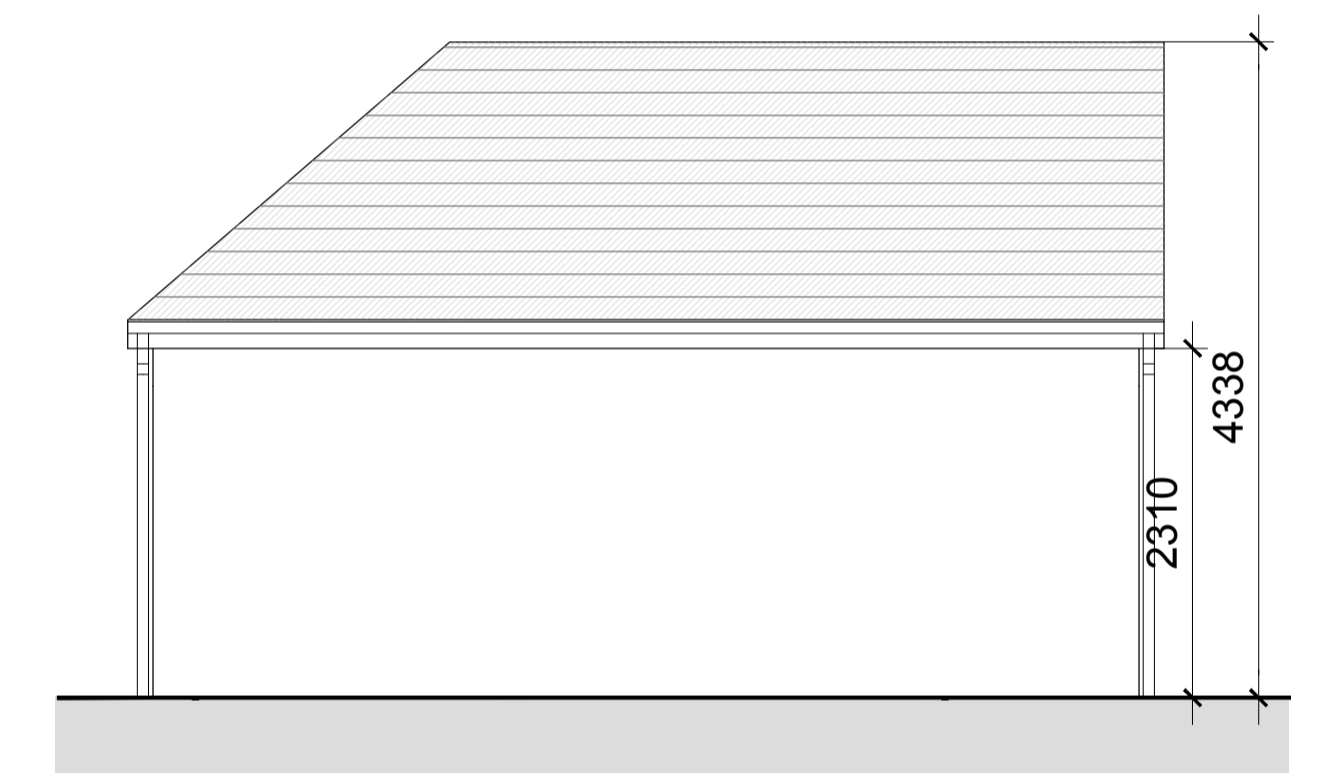
**TYPE C BIN STORE
Scale 1:50**



**NORTH ELEVATION - Bin / Bicycle Store Type D
Scale 1:50**

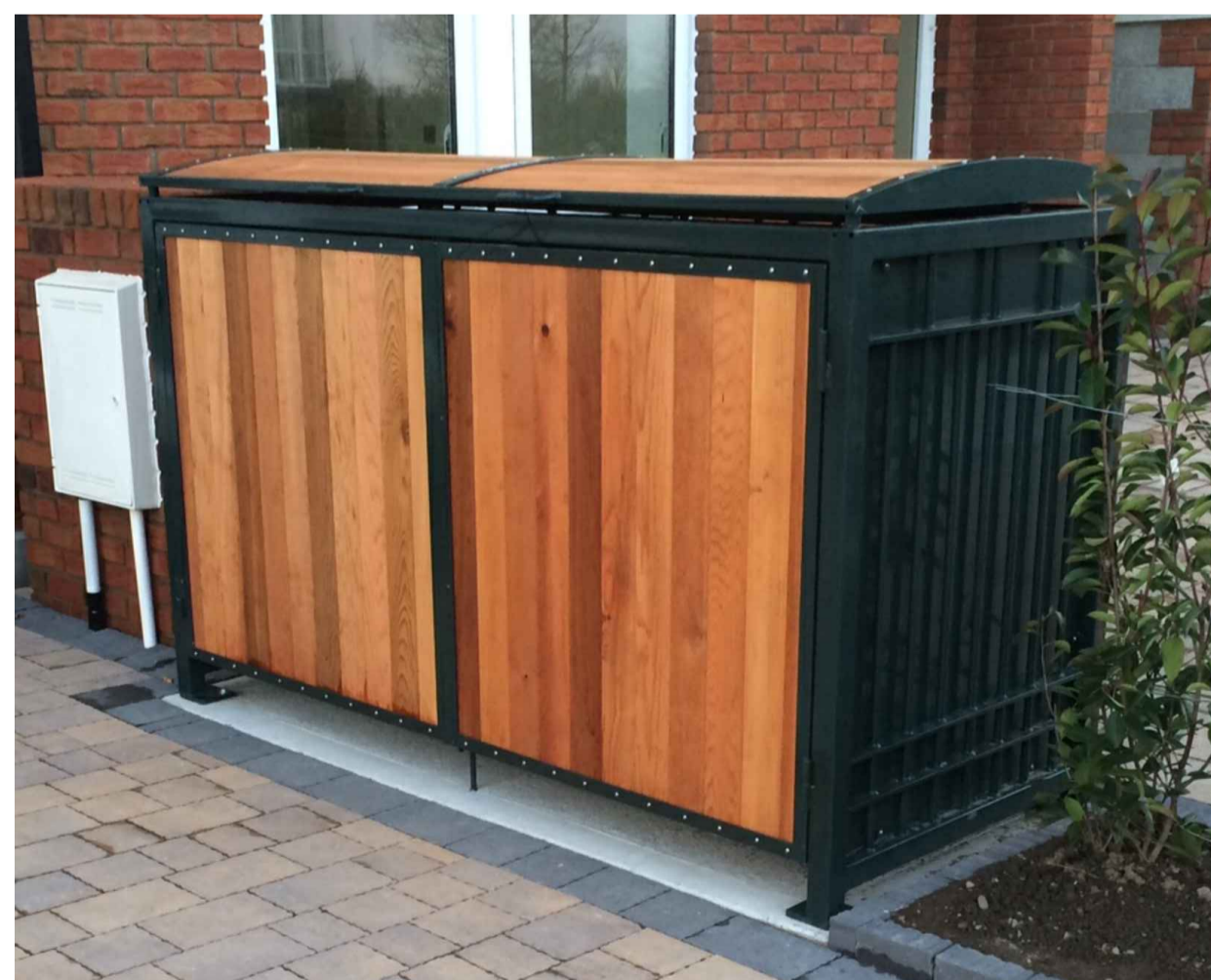


**SOUTH ELEVATION - Bin / Bicycle Store Type D
Scale 1:50**

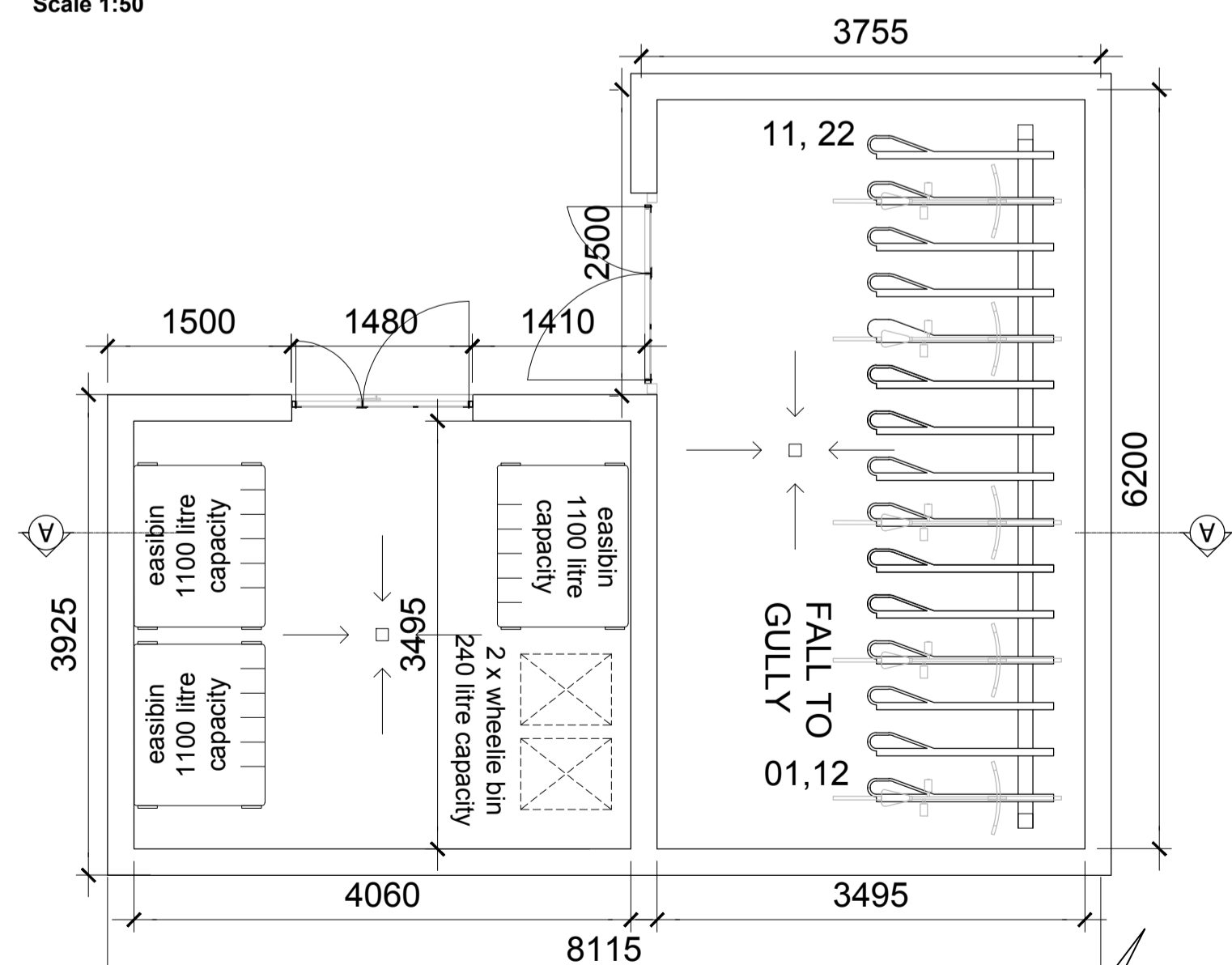


**EAST ELEVATION - Bin / Bicycle Store Type D
Scale 1:50**

Quantity - 1 cycle storage space per bedroom shall be applied. Visitor cycle parking shall also be provided at a standard of 1 space per 2 residential units. Each apartment block comprises 6 x 2 bed & 6 x 1 bed units and generates a cycle provision of 24 cycles per apartment block and this is provided for within the bike store. Double height racking system to be provided to deliver this provision.

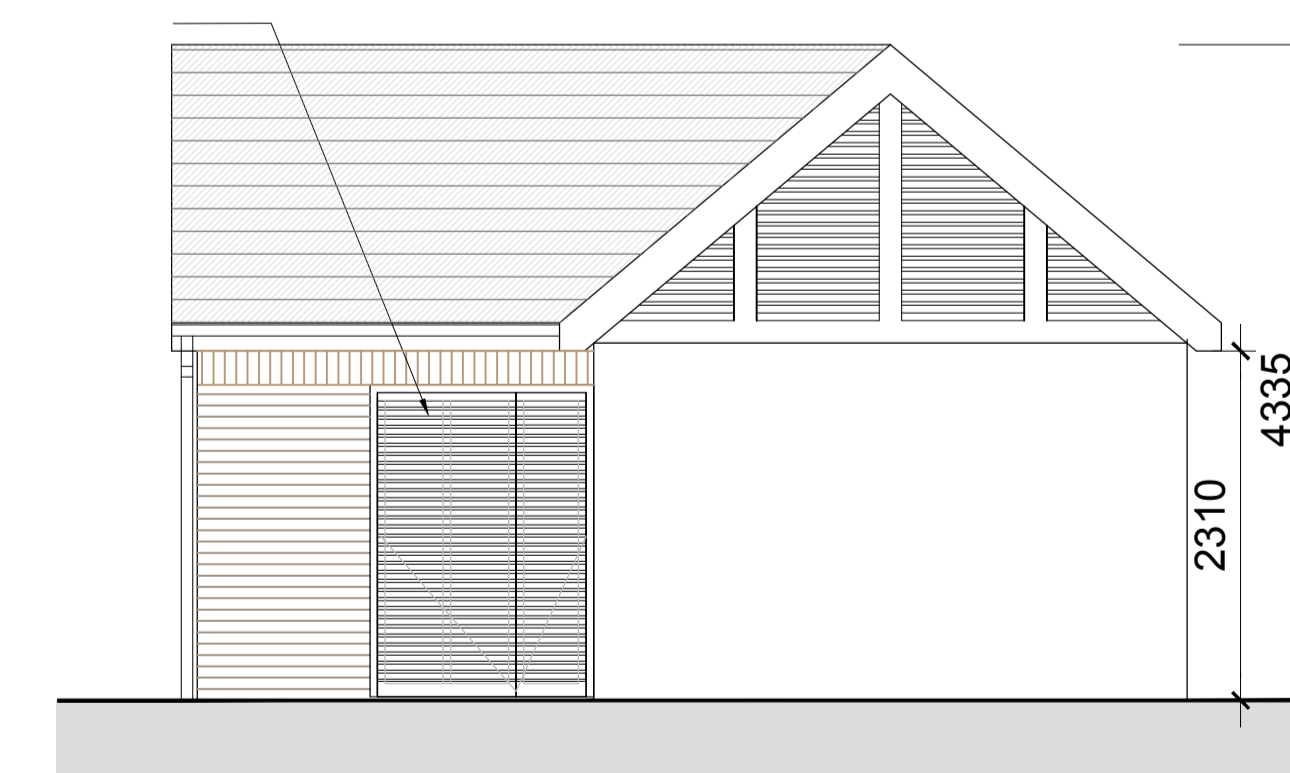


**EXAMPLE OF TYPICAL BIN STORE
INDICATIVE ONLY, COLOUR FINISH TO MATCH THAT OF HOUSE FRONT DOOR**

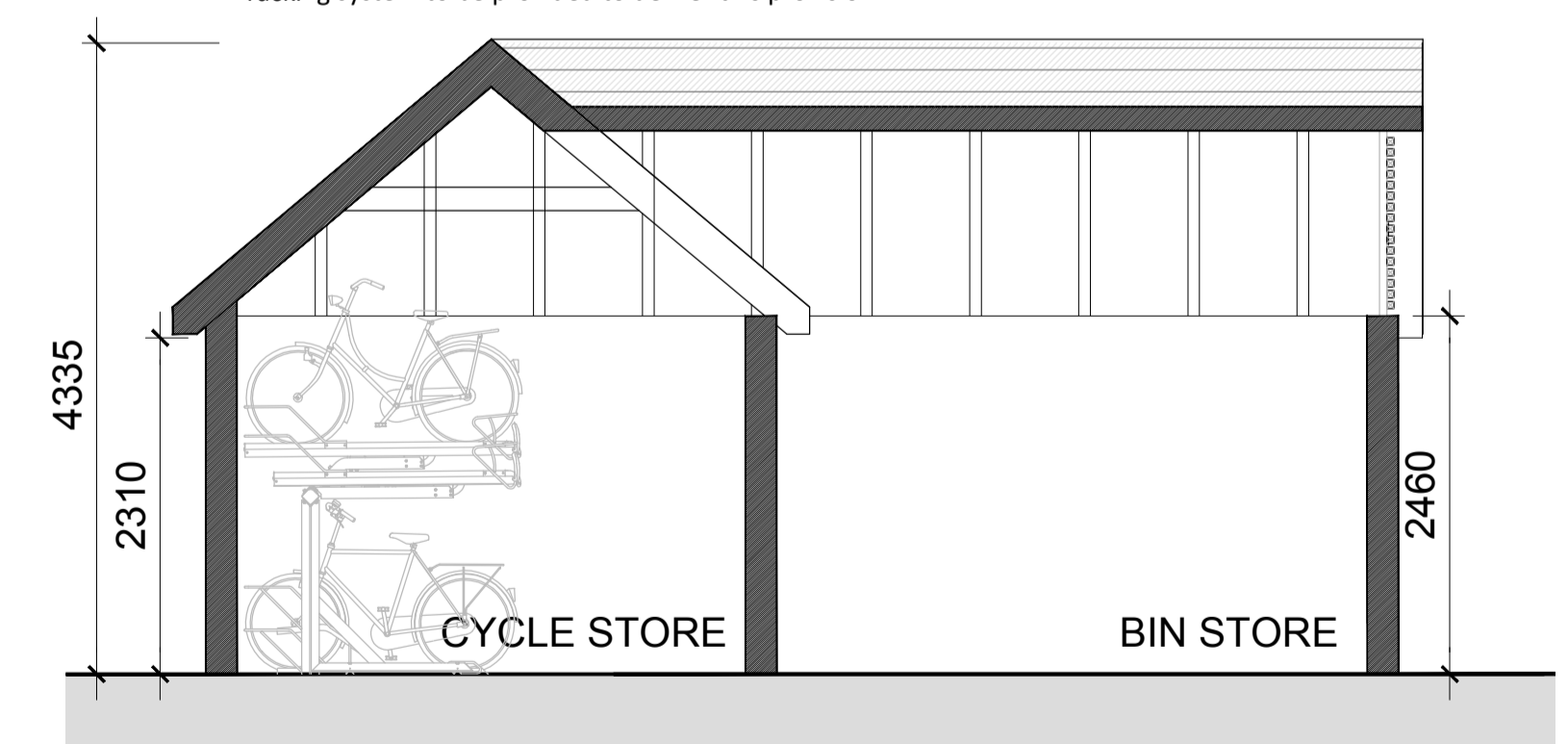


**FLOOR PLAN - Bin / Bicycle Store Type D
Scale 1:50**

CONTROLLED GATE ACCESS
TO ALL BICYCLE STORES



**WEST ELEVATION - Bin / Bicycle Store Type D
Scale 1:50**



**SECTION A-A - Bin / Bicycle Store Type D
Scale 1:50**

NOTES:

DO NOT SCALE FROM DRAWINGS. WORK TO FIGURED DIMENSIONS ONLY. ARCHITECT TO BE NOTIFIED OF ALL DISCREPANCIES.

REVISIONS		
DATE	DESCRIPTION	No.

	PROJECT TITLE:	Foxburrow, Portlaoise	DATE:	June'20	DRAWN BY:	LH
	DRAWING TITLE:	Bike and Bin Store Details Sheet 1	SCALE:	As Shown	REVISOR:	
	JOB NO.:	18030	DRAWING NO.:	PL25		
	<small>1 Grantham Street, Dublin 8, D08 A49Y, Ireland. Tel: 01-4788700 Fax: 01-4788711 E-Mail: arch@mcoorm.com</small>					